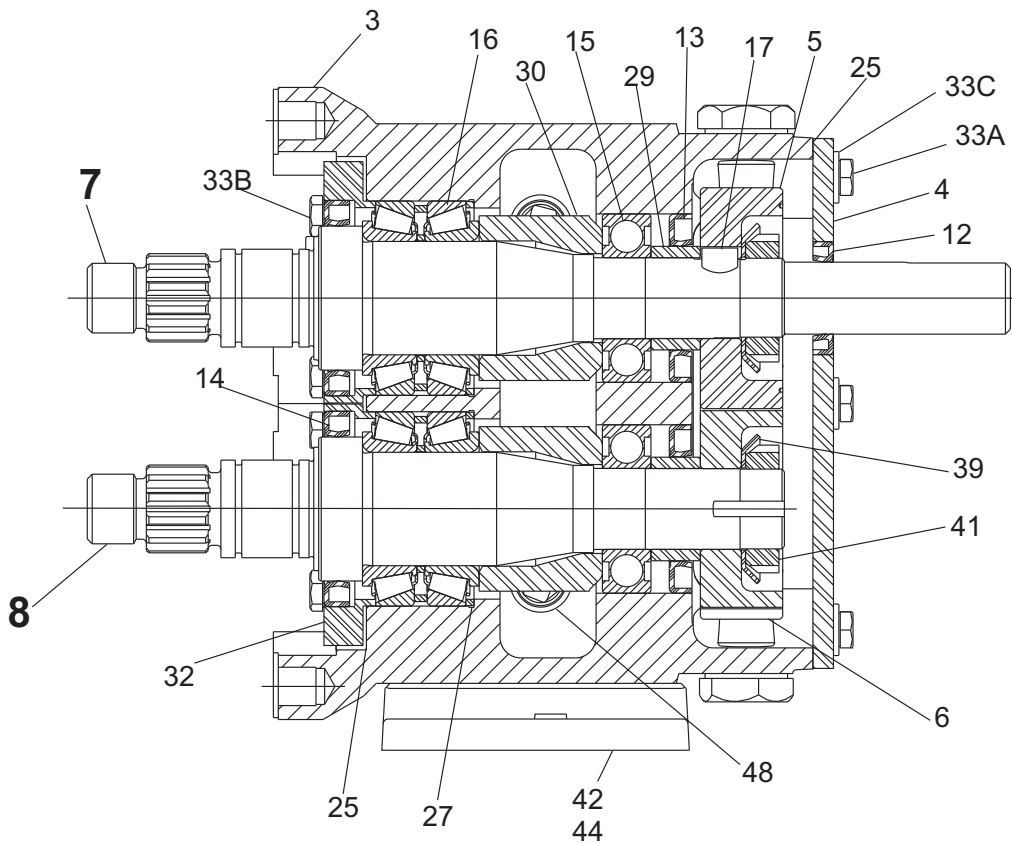
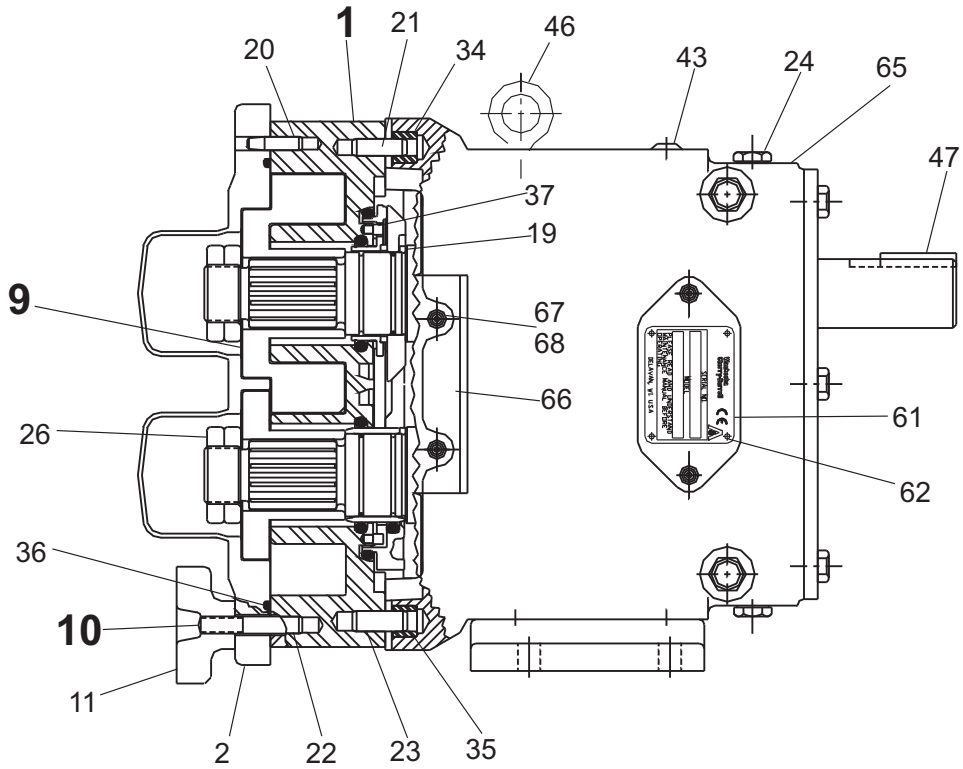


Parts List

006, 014, 015, 018, 024-U1 Pump Parts



PD100-308

006, 014, 015, 018, 024-U1 Pump Parts

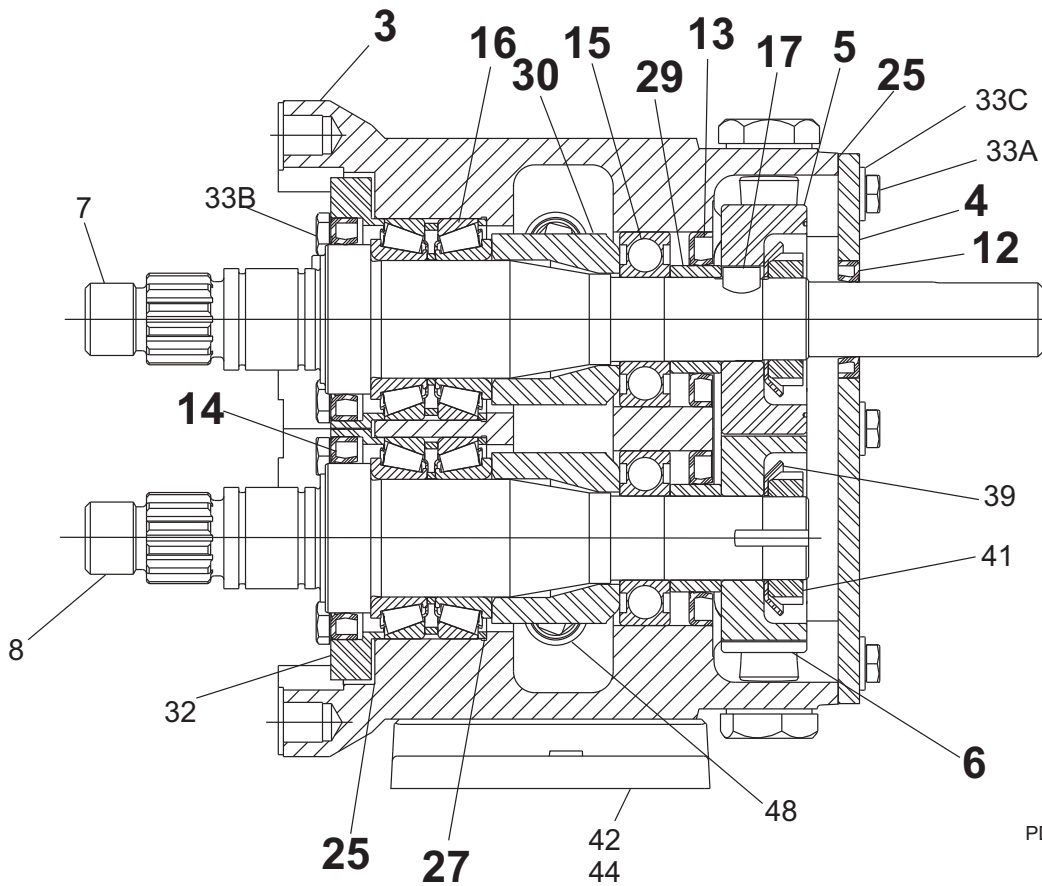
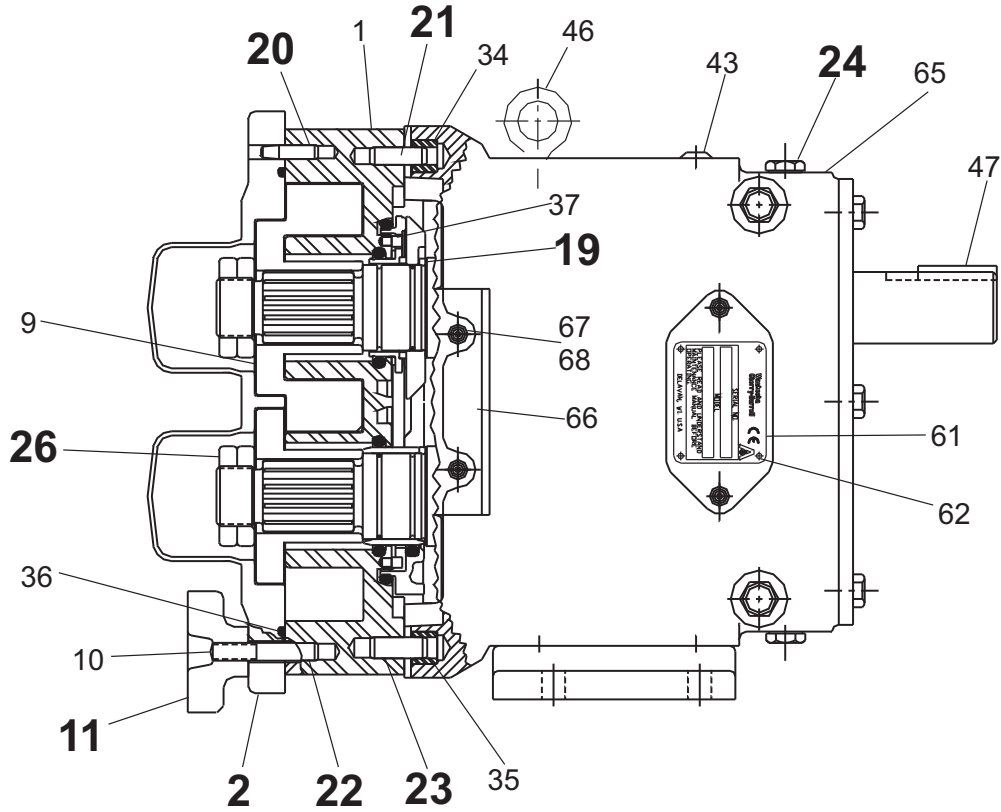
ITEM NO.	DESCRIPTION	QTY. PER PUMP	PART NO.	NOTES
1	Pump Body	1	See Note 1	1
7	006, 014, 015-U1 Drive Shaft	1	015008000+	3, 43, 46
	006, 014, 015-U1 Drive Shaft	1	114642+	4, 43, 46
	018, 024-U1 Drive Shaft	1	018008000+	3, 43, 46
	018, 024-U1 Drive Shaft	1	114644+	4, 43, 46
8	006, 014, 015-U1 Short Shaft	1	015009000+	3, 46
	006, 014, 015-U1 Short Shaft	1	114643+	4, 46
	018, 024-U1 Short Shaft	1	018009000+	3, 46
	018, 024-U1 Short Shaft	1	114645+	4, 46
9	006-U1 Rotor, Twin Wing, Alloy 88	2	006010000+	2
	006-U1 Rotor, Twin Wing, 316SS	2	006010200+	2
	006-U1 Rotor, Single Wing, Alloy 88	2	117238+	2, 12
	014, 015-U1 Rotor, Twin Wing, Alloy 88	2	015010000+	2
	014, 015-U1 Rotor, Twin Wing, 316SS	2	015010200+	2
	015-U1 Rotor, Single Wing, Alloy 88	2	117255+	2, 12a, 13
	018, 024-U1 Rotor, Twin Wing, Alloy 88	2	018010000+	2
	018, 024-U1 Rotor, Twin Wing, 316SS	2	018010200+	2
10A	006-015-U1 Stud	8	AD0011000	
10B	006-015-U1 Stud, Jacketed Cover	8	AD0011J00	
10C	014-U1 Stud	6	AD0011000	
	014-U1 Stud	2	35547+	
10D	014-U1 Stud, Jacketed Cover	6	AD0011J00	
	014-U1 Stud, Jacketed Cover	2	35548+	
10E	018-U1 Stud	8	018011000+	
10F	018-U1 Stud, Jacketed Cover	8	AD0011100	
10G	024-U1 Stud	6	018011000+	
	024-U1 Stud	2	35547+	
10H	024-U1 Stud, Jacketed Cover	6	AD0011100	
	024-U1 Stud, Jacketed Cover	2	35548+	
	Stud Retainer Assembly	1	N/A	5

PL5060-CH31

Notes:

- Contact Customer Service with serial number of pump for part number.
- Standard clearances and finishes for rotor part numbers shown. Contact Customer Service for optional clearances and finishes.
- Pumps shipped prior to July 30, 2001.
- Pumps shipped starting July 30, 2001.
- No longer manufactured, consult Customer Service for upgrade of gear case subassembly.
- Replaces 006 010 010 straight and 006 010 090 90° (degree) rotors.
- Replaces 015 010 010 straight and 015 010 090 90° (degree) rotors.
- Replaces 018 010 010 straight and 018 010 090 90° (degree) rotors.
- Single wing rotors can not be used in Rectangular Flange Inlet pumps.
- Tru-Fit drive shaft is longer than the standard drive shaft listed here. See page 110.
- SPX FLOW now offers shafts with pressed-on bearings. See page 113.

006, 014, 015, 018, 024-U1 Common Parts



PD100-309

006, 014, 015, 018, 024-U1 Common Parts

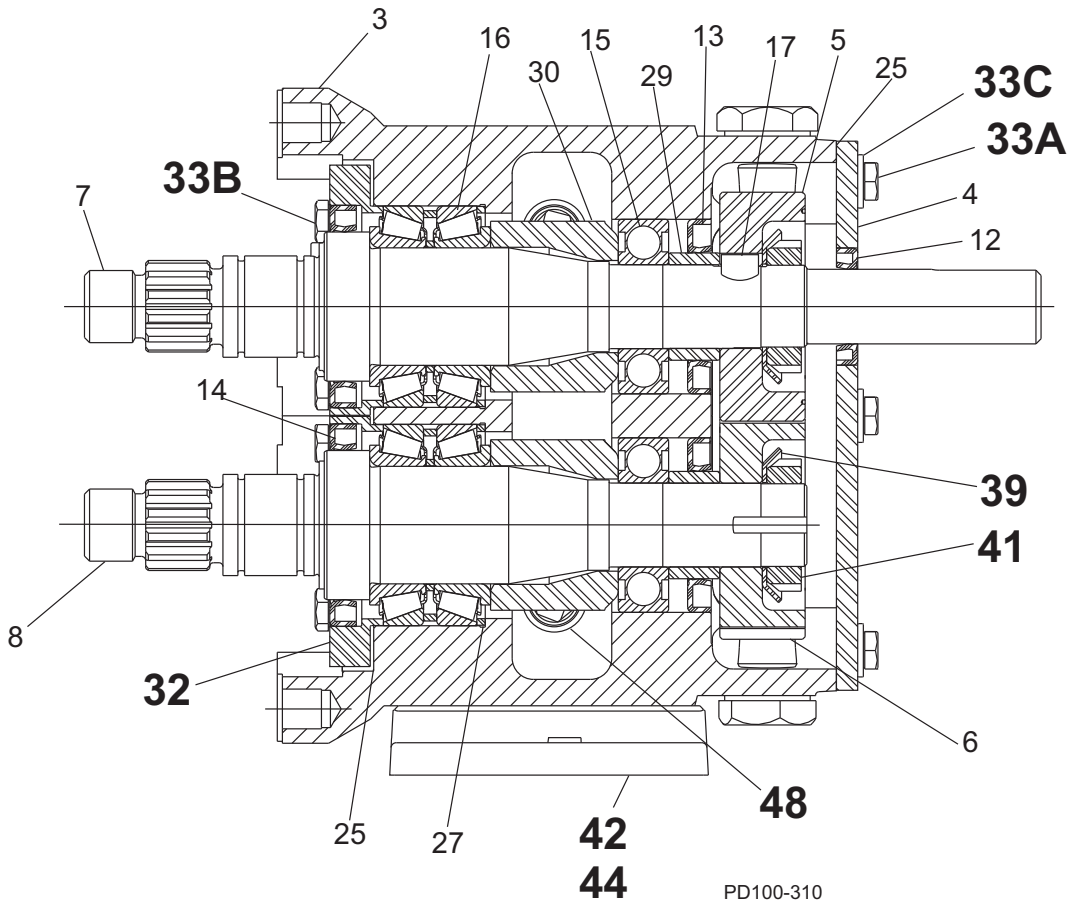
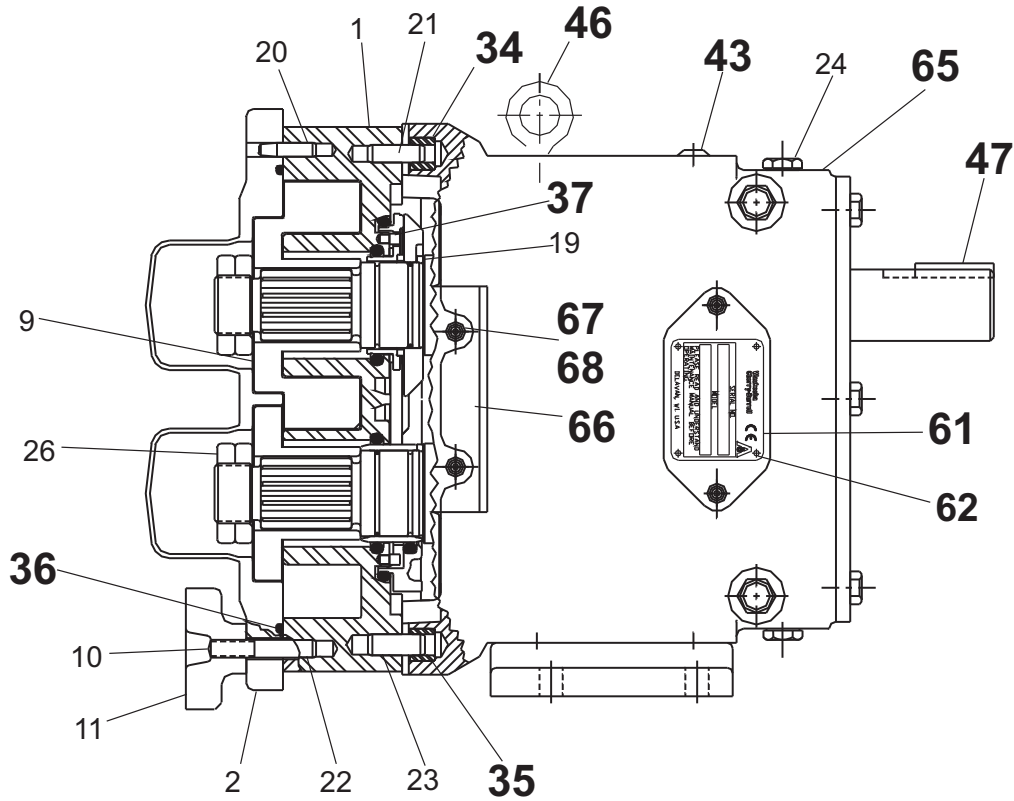
ITEM NO.	DESCRIPTION	QTY. PER PUMP	PART NO.	NOTES
2	Pump Cover	1	AD0002S00	
	Jacketed Cover	1	AD0002J10	
	Pump Cover Vented - Complete Assembly			1
3	006, 015-U1 Gear Case Assembly, CI	1	115231-C	9
	006, 015-U1 Gear Case Assembly, SS (Optional)	1	115243-C	9
	014-U1 Gear Case Assembly, CI	1	115467-C	9
	014-U1 Gear Case Assembly, SS (Optional)	1	115479-C	9
	018-U1 Gear Case Assembly, CI	1	115233-C	9
	018-U1 Gear Case Assembly, SS (Optional)	1	115245-C	9
	024-U1 Gear Case Assembly, CI	1	115469-C	9
	024-U1 Gear Case Assembly, SS (Optional)	1	115481-C	9
4	Gear Case Cover, Steel	1	020106000+	
	Gear Case Cover, SS; Optional	1	102280+	
5	Gear, Drive Shaft, Spur	1	107997+	
6	Gear, Short Shaft, Spur	1	107997+	
11	Wing Nut	8	105850+	
	Hex Nut, optional	8	108369+	
12	Oil Seal, Gear Case Cover	1	000030016+	
13	Oil Seal, Gear Case Rear	2	000030017+	
14	Grease Seal, Bearing Retainer	2	121679+	7
15	Bearing, Rear	2	015035000+	
16	Bearing, Front	2	101714+	4
	Bearing, Front	2	015036000+	3
17	Key, Gear	2	015037000+	
19	Drive Pin, Seal Seat and Sleeve	2	CD0126000	
20	Dowel Pin, Cover Side, .245" x .85"	1	137001+	43
21	Dowel Pin, Gear Case Side, .245" x 1.0"	1	124581+	44
22	Dowel Pin, Cover Side, .308" x .85"	1	137002+	43
23	Dowel Pin, Gear Case Side, .308" x 1.0"	1	124582+	44
24	Oil Plug, M20 x 1.5"	5	115798+	40
	Oil Level Indicator, M20 x 1.5	1	115799+	40
	Oil Level Indicator, ATEX, M20 x 1.5	1	131417+	
25	Silicone Sealant	1	000142301+	
26	Jam Nut, Rotor	4	AD0052001	
27	Shim Kit	2	117889+	4
29	Spacer, Gear to Rear Bearing	2	015055000+	
30	Bearing Spacer	2	101814+	4
	Bearing Spacer	2	015055001+	3

PL5060-CH32

Notes

- Please configure in eSales or contact Customer Service.
- Pumps shipped prior to July 30, 2001
- Pumps shipped starting July 30, 2001.
- For bearing isolator kit, and for bearings/grease seals for older pumps, see page 111.
- Pumps shipped starting July 30, 2001. Assembly includes shafts and timing gears.
- For pumps shipped starting approx. October 2003. Pumps shipped prior to that used plug with washer, 000046002+, qty. 6. Verify date of manufacture to identify correct part needed.
- Exposed length of dowel pin: .444" (11.3 mm)
- Exposed length of dowel pin: .563" (14.3 mm)

006, 014, 015, 018, 024-U1 Common Parts, cont'd



PD100-310

006, 014, 015, 018, 024-U1 Common Parts, cont'd

ITEM NO.	DESCRIPTION	QTY. PER PUMP	PART NO.	NOTES
32	Bearing Retainer, Front	2	120332+	7, 1
	Bearing Retainer, Front (for SS Gearcase)	2	101810+	7, 2
33A, 33B	1/4-20 x .75" HHCS, Standard	14	30-287	
	1/4-20 x .75" HHCS, SS	14	30-58	
33C	1/4" Flat Washer, Gear Case Cover	6	43-108	
34	Dowel Bushing, Upper	1	AD0116000	
35	Dowel Bushing, Lower	1	AD0116100	
* * * * *	O-Ring, Pump Cover, Buna N	1	N70252	
	O-Ring, Pump Cover, EPDM		E70252	
	O-Ring, Pump Cover, FKM		V70252	
	O-Ring, Pump Cover, Silicone		S75251	
* *	014-U1 O-Ring, Rectangular Flange	1	N70241	
	024-U1 O-Ring, Rectangular Flange	1	N70241	14
	024-U1 O-Ring, Rectangular Flange		N70245	14
37	Stop Pin, Seal	2	015126000+	
39	Lockwasher, Gear	2	STD136005	
41	Locknut, Gear	2	STD236005	
42	Gear Case Shim, CI	1	020110000+	
	Gear Case Shim, SS; Optional	1	102284+	
	Pump Pedestal, 6.75"; Optional	1	014110675+	
43	Plastic Cap Plug	8	000121003+	
44	5/16-18 x 1" SHCS, Standard	4	30-343	
	5/16-18 x 1" SHCS, SS	4	30-525	
45	006, 014, 015-U1 Body Retaining Screw	2	30-523	16
	018, 024-U1 Body Retaining Screw	2	30-704	16
46	Eye Bolt	2	30-722	
47	Key, Coupling - 3/16 x 3/16 x 1-1/8"	1	000037001+	
48	Cleanout Plug	2	35824+	15
61	Name Plate, Sanitary	1	126530+	
62	#2 x .125" RHDS	4	30-355	
65	Caution Plate	2	121694+	
66	Warning Label	2	33-63	17
67	006, 015, 018 - U1 Grease Fitting, 1/8" (straight)	4	BD0092000	
	014, 024-U1 Grease Fitting, 1/8" (angled)	4	BD0092100	
68	Plastic Cap, Grease Fitting	4	BD0093000	

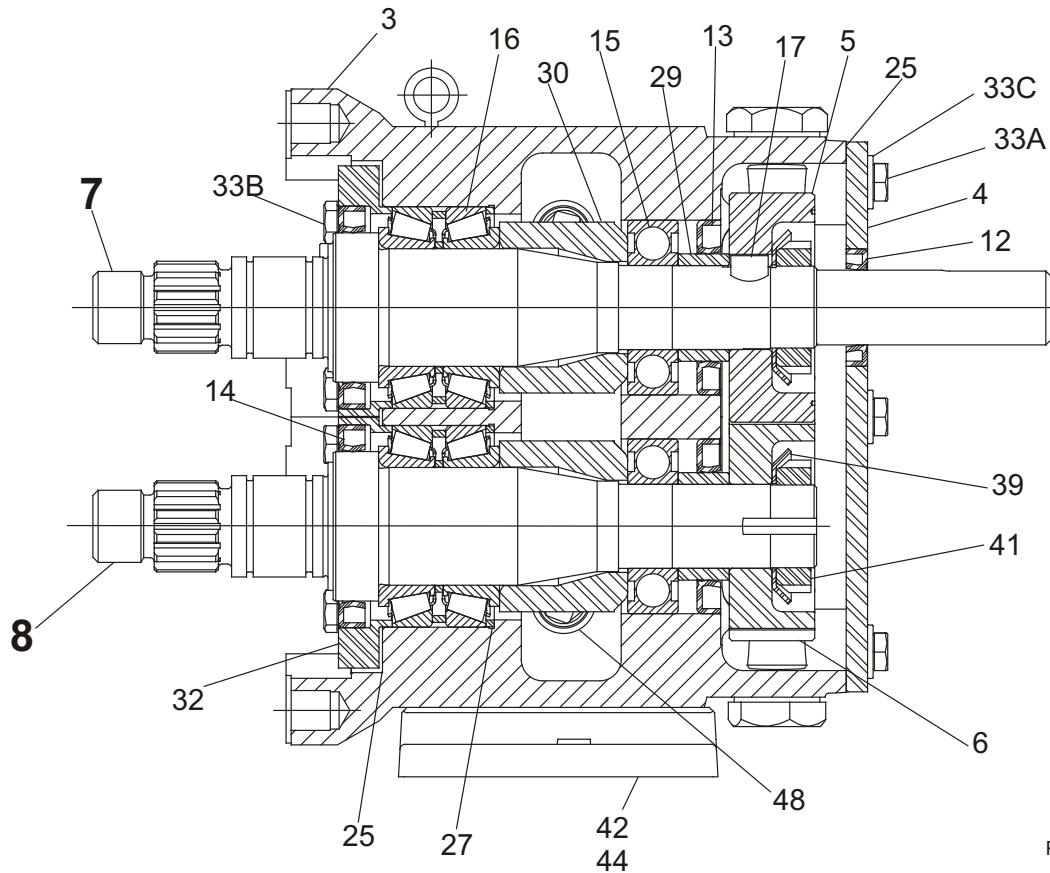
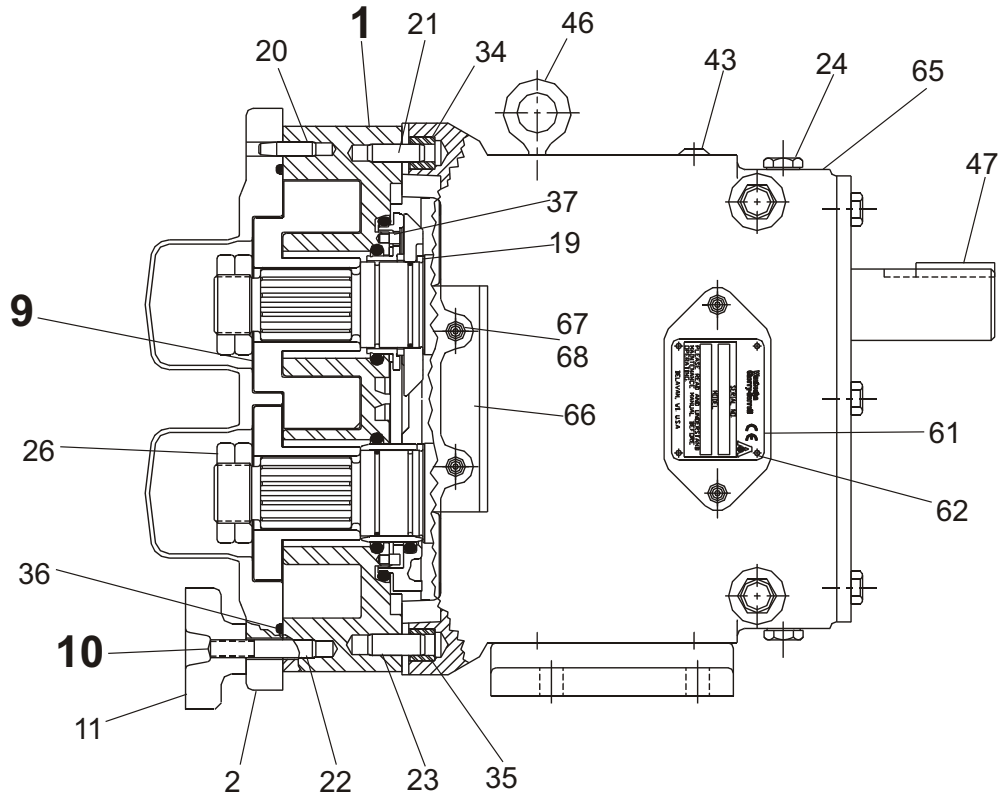
PL5060-CH33

Notes:

*** Recommended Spare Parts**

- Used with seal part # 121679+. See page 111.
- For SS gearcase or bearing isolator; used with seal part # 101716+. See page 111.
- For bearing isolator kit, and for bearings/grease seals for older pumps, see page 111.
- New O-rings N70245 (024) introduced in 2001. Fits close to inlet opening.
- For an older gearcase without a threaded plug hole, use plug p/n BD0121100+.
- Body retaining screws can only be used with a body and a gear case that have holes for this purpose. Current pump design includes holes for the body retaining screws.
- Decal kit contains 2 x 121694+ (Caution, Read Manual label); 2 x 33-63 (Small warning label (models 006-040)); 2 x 33-60 (Large warning label (models 060-320)); 1 x 7403951 (SPX name label); 1 x 125115+ (Patent label).

030, 033, 034, 040-U1 Pump Parts



PD100-311

030, 033, 034, 040-U1 Pump Parts

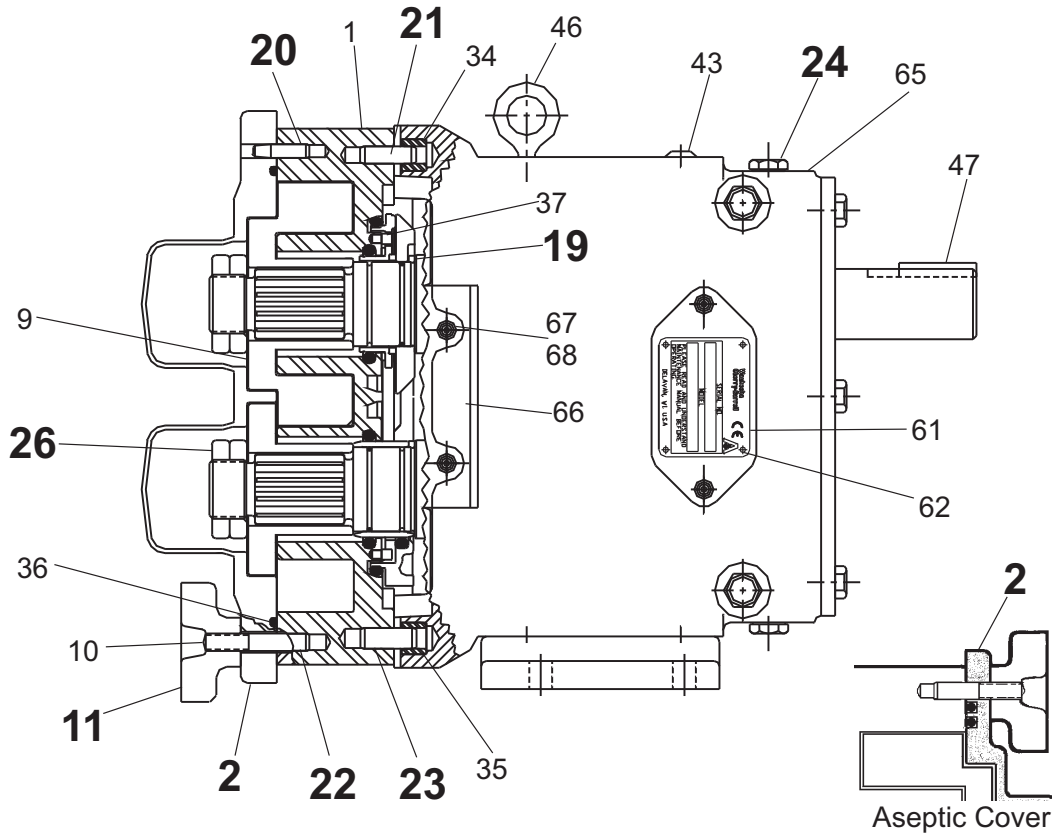
ITEM NO.	DESCRIPTION	QTY. PER PUMP	PART NO.	NOTES
1	030, 034, 040-U1 Pump Body	1	SeeNote1	1
	033-U1 Pump Aseptic Body	1	033001020+	
7	030, 034-U1 Drive Shaft, Std.	1	030008000+	3, 41, 46
	030, 034-U1 Drive Shaft, Optional 17-4PH	1	35341+	3, 41, 46
	030, 034-U1 Drive Shaft, Std.	1	114646+	4, 41, 46
	030, 034-U1 Drive Shaft, Optional 17-4PH	1	114779+	4, 41, 46
	033-U1 Drive Shaft, Std.	1	033008000+	3, 41, 46
	033-U1 Drive Shaft, Std.	1	114648+	4, 41, 46
	040-U1 Drive Shaft, Std.	1	118718+	41, 46
	040-U1 Drive Shaft, Optional 17-4PH	1	118812+	41, 46
8	030, 034-U1 Short Shaft, Std.	1	030009000+	3, 46
	030, 034-U1 Short Shaft, Optional 17-4PH	1	35342+	3, 46
	030, 034-U1 Short Shaft, Std.	1	114647+	4, 46
	030, 034-U1 Short Shaft, Optional 17-4PH	1	114780+	4, 46
	033-U1 Short Shaft, Std.	1	033009000+	3, 46
	033-U1 Short Shaft, Std.	1	114649+	4, 46
	040-U1 Short Shaft, Std.	1	118719+	46
	040-U1 Short Shaft, Optional 17-4PH	1	118813+	46
9	030, 034-U1 Rotor, Twin Wing, Alloy 88	2	030010000+	2
	030, 034-U1 Rotor, Twin Wing, 316SS	2	030010200+	2
	030-U1 Rotor, Single Wing, Alloy 88	2	117291+	2, 12, 13
	033-U1 Rotor, Twin Wing, Alloy 88	2	33A010000	2
	033-U1 Rotor, Single Wing, Alloy 88	2	117326+	2, 12A
	040-U1 Rotor, Twin Wing, Alloy 88	2	118728+	2
	040-U1 Rotor, Twin Wing, 316SS	2	118753+	2
	040-U1 Rotor, Single Wing, Alloy 88	2	122711+	2, 13
10A	030-033-U1 Stud	8	108842+	
10B	030-033-U1 Stud, Jacketed Cover	8	108845+	
10C	034-U1 Stud	6	108842+	
	034-U1 Stud	2	35555+	
10D	034-U1 Stud, Jacketed Cover	6	108845+	
	034-U1 Stud, Jacketed Cover	2	35549+	
10E	040-U1 Stud	8	118897+	
	040-U1 Stud, Jacketed Cover	8	118898+	
	Stud Retainer Assembly	1	N/A	5

PL5060-CH36a

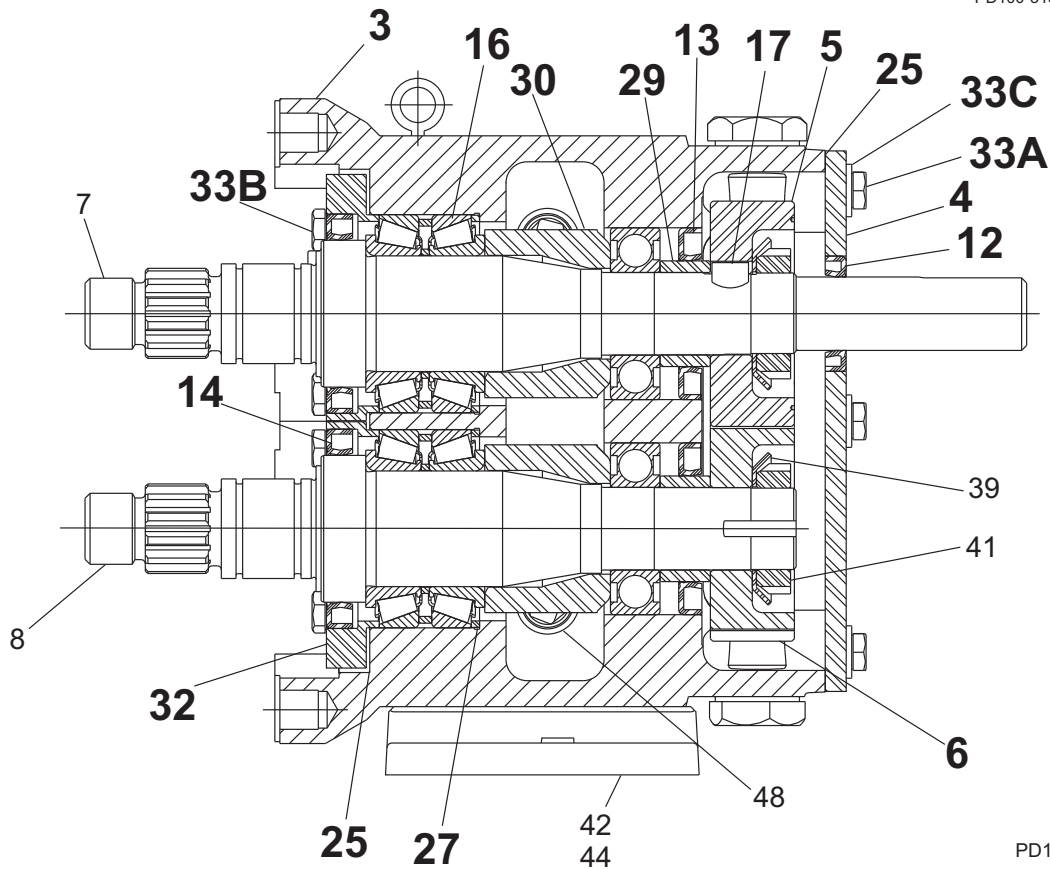
Notes:

- Contact Customer Service with serial number of pump for part number.
- Standard clearances and finishes for rotor part numbers shown. Contact Customer Service for optional clearances and finishes.
- Pumps shipped prior to July 30, 2001.
- Pumps shipped starting July 30, 2001.
- No longer manufactured, consult Customer Service for upgrade of gear case subassembly.
- Replaces 030010010 straight and 030010090 90° (degree) rotors.
- 12A.Replaces 33A010010 straight and 33A010090 90° (degree) rotors.
- Single wing rotors cannot be used in rectangular flange inlet pumps.
- Tru-Fit drive shaft is longer than the standard drive shaft listed here. See page 110.
- SPX FLOW now offers shafts with pressed-on bearings. See page 113.

030, 033, 034, 040-U1 Common Parts



PD100-313



PD100-312

030, 033, 034, 040-U1 Common Parts

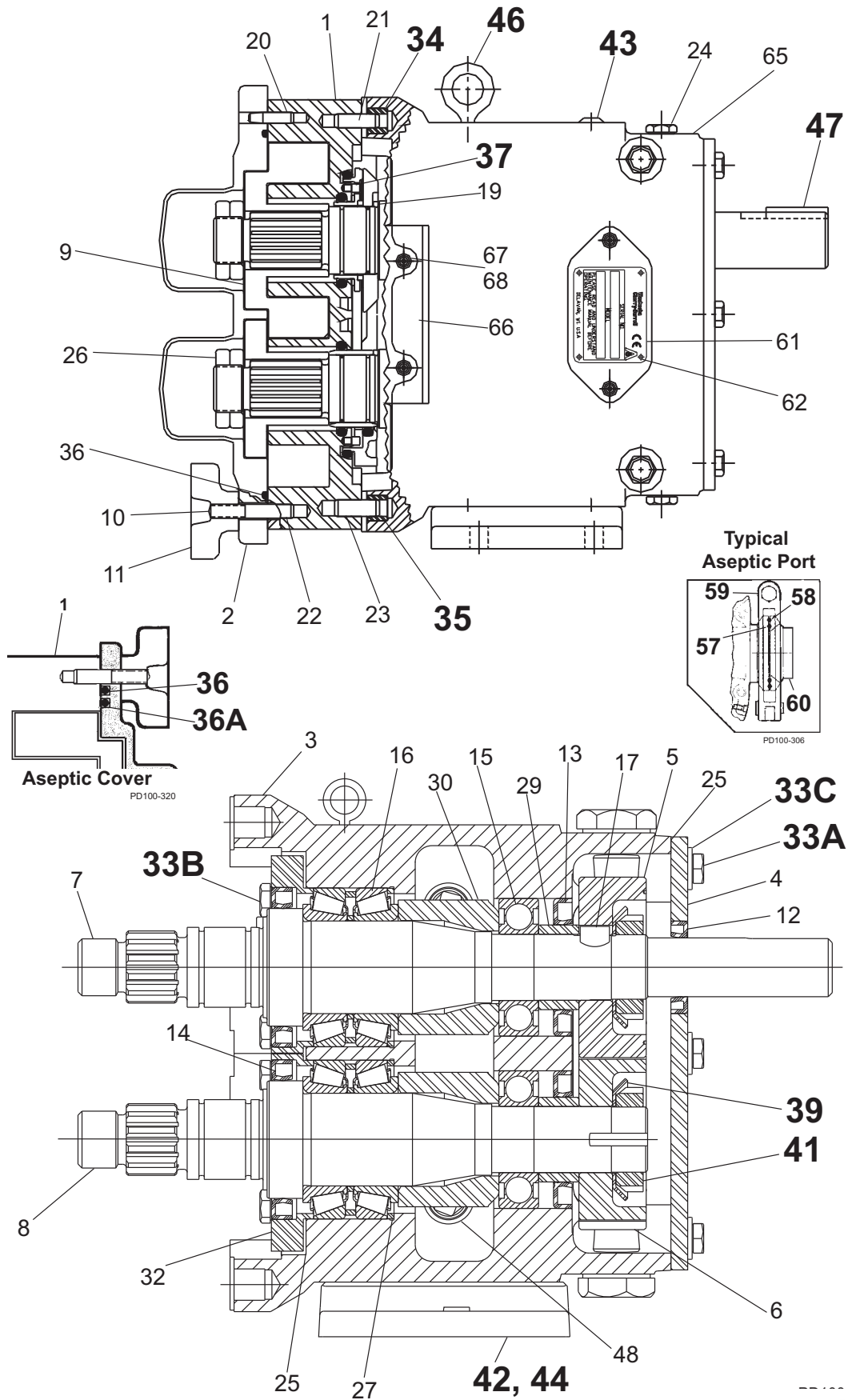
ITEM NO.	DESCRIPTION	QTY. PER PUMP	PART NO.	NOTES
2	030, 034, 040-U1 Pump Cover	1	BD0002S00	
	030, 034, 040-U1 Jacketed Cover	1	BD0002J10	
	033-U1 Pump Cover	1	33A002020	
	Pump Cover Vented - Complete Assembly			1
3	030-U1 Gear Case Assembly, CI	1	115235-C	6
	030-Gear Case Assembly, SS; Optional	1	115247-C	6
	033-U1 Gear Case Assembly, CI	1	115289-C	6
	033-U1 Gear Case Assembly, SS; Optional	1	134061-C	6
	034-U1 Gear Case Assembly, CI	1	115471-C	6
	034-U1 Gear Case Assembly, SS; Optional	1	115483-C	6
	040-U1 Gear Case Assembly, CI	1	121660-C	6
	040-U1 Gear Case Assembly, SS; Optional	1	124125-C	6
4	Gear Case Cover, Steel	1	040106000+	
	Gear Case Cover, SS; Optional	1	102281+	
5	Gear, Drive Shaft, Spur	1	107999+	
6	Gear, Short Shaft, Spur	1	107999+	
11	Wing Nut	8	105851+	
	Hex Nut, optional	8	108370+	
12	Oil Seal, Gear Case Cover	1	000030013+	
13	Oil Seal, Gear Case Rear	2	000030014+	
14	Grease Seal, Bearing Retainer	2	121680+	7
15	Bearing, Rear	2	030035000+	
16	Bearing, Front	2	101715+	
	Bearing, Front	2	030036000+	3
17	Key, Gear	2	BD0037000	
19	Drive Pin, Seal Seat and Sleeve	2	CD0126000	
20	Dowel Pin, Cover Side, .245" x .85"	1	137001+	43
21	Dowel Pin, Gear Case Side, .308" x 1.0"	1	124582+	44
22	Dowel Pin, Cover Side, .308" x .85"	1	137002+	43
23	Dowel Pin, Gear Case Side, .370" x 1.0"	1	124583+	44
24	Oil Plug, M20 x 1.5"	5	115798+	40
	Oil Level Indicator, M20 x 1.5	1	115799+	40
	Oil Level Indicator, ATEX, M20 x 1.5	1	131417+	
25	Silicone Sealant	1	000142301+	
26	Jam Nut, Rotor	4	BD0052001	
27	Shim Kit	2	117890+	
29	Spacer, Gear to Rear Bearing	2	030055000+	
30	Bearing Spacer	2	101815+	
32	Bearing Retainer, Front	2	120333+	7

PL5060-CH37a

Notes:

- Please configure in eSales or contact Customer Service.
- Pumps shipped prior to July 30, 2001. Verify the serial number of the pump to ensure the correct part is referenced.
- Gear case assy. includes timing gears and 316SS shafts. SS gearcase assy. includes 316LSS bearing retainer.
- For bearing isolator kit, and for bearings/grease seals for older pumps, see page 111.
- For pumps shipped after 5/15/03. Pumps shipped prior to 5/15/03 used plug w/washer, p/n 000046003+, qty. 6. Verify date of manufacture to identify correct part needed.
- Exposed length of dowel pin: .444" (11.3 mm)
- Exposed length of dowel pin: .563" (14.3 mm)

030, 033, 034, 040-U1 Common Parts, cont'd



030, 033, 034, 040-U1 Common Parts, cont'd

ITEM NO.	DESCRIPTION	QTY. PER PUMP	PART NO.	NOTES
33A	5/16-18 x .75" HHCS, Std gear case	6	30-283	
	1/2-20 x .50" HHCS, SS Gear case	6	30-526	
33B	5/16-18 x .75" SHCS, Brg Ret. Std gear case	8	30-296	
	5/16-18 x .75" SHCS, Brg Ret., SS Gear case	8	30-29	
33C	5/16" Flat Washer, Std gear case	6	43-194	
34	Dowel Bushing, Upper	1	BD0116000	
35	Dowel Bushing, Lower	1	BD0116100	
* 36	030, 034, 040, U1 O-Ring, Pump Cover, Buna N	1	N70261	
	030, 034, 040, U1 O-Ring, Pump Cover, EPDM	1	E70261	
	030, 034, 040, U1 O-Ring, Pump Cover, FKM	1	V70261	
	030, 034, 040, U1 O-Ring, Pump Cover, Silicone	1	S75261	
	033-U1 O-Ring, Pump Cover, Outer, EPDM	1	033117012+	11
	033-U1 O-Ring, Pump Cover, Outer, FKM	1	033117014+	11
	033-U1 O-Ring, Pump Cover, Outer, Silicone	1	033117013+	11
* 36A	033-U1 O-Ring, Pump Cover, Inner, EPDM	1	033117002+	11
	033-U1 O-Ring, Pump Cover, Inner, FKM	1	033117004+	11
	033-U1 O-Ring, Pump Cover, Inner, Silicone	1	033117003+	11
* 36B	034-U1 O-Ring, Rectangular Flange	1	N70260	14
	034-U1 O-Ring, Rectangular Flange	1	N70357	14
37	Stop Pin, Seal	2	030126000+	
39	Lockwasher, Gear	2	CD0036W00	
41	Locknut, Gear	2	CD0036N00	
42	Gear Case Shim, Cl	1	040110000+	
	Gear Case Shim, SS	1	102285+	
	Pump Pedestal, 6.25"	1	BD0110SM0	
43	Plastic Cap Plug	8	000121002+	
44	3/8-16 x 1" SHCS, Std gear case	4	30-344	
	3/8-16 x 1" SHCS, SS gear case	4	30-189	
45	Body Retaining Screw (030,033,034-U1 only)	2	30-211	16
	Body Retaining Screw (040-U1 only)	2	30-543	16
46	Eye Bolt	2	30-723	
47	Key, Coupling - 1/4 x 1/4 x 1"	1	000037002+	
48	Cleanout Plug	2	41013+	15
* 57	033-U1 O-Ring, Port, Inner	2	S75223	11
* 58	033-U1 O-Ring, Port, Outer	2	V70232	11
59	033-U1 2.5" 13I "I" Line Clamp	2	0344223+	11
60	033-U1 1.5" Aseptic Ferrule, uses 2.5" clamp	2	BD0267230	11

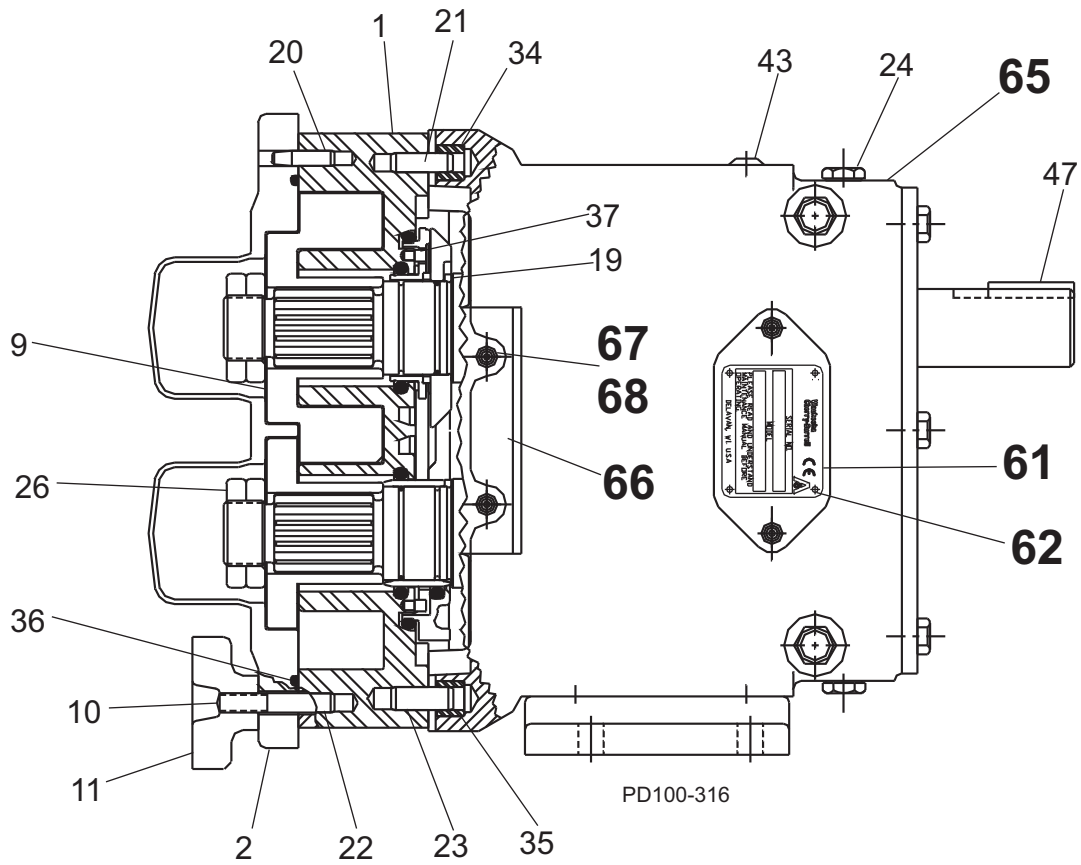
PL5060-CH38a

Notes:

*** Recommended Spare Parts**

- 11. Used on 033-U1 only.
- 14. New O-ring N70357 introduced in 2001. Fits close to inlet opening.
- 15. For an older gearcase without a threaded plug hole, use plug p/n BD0121100.
- 16. Body retaining screws can only be used with a body and a gear case that have holes for this purpose. Current pump design includes holes for the body retaining screws.

030, 033, 034, 040-U1 Common Parts, cont'd



030, 033, 034, 040-U1 Common Parts, cont'd

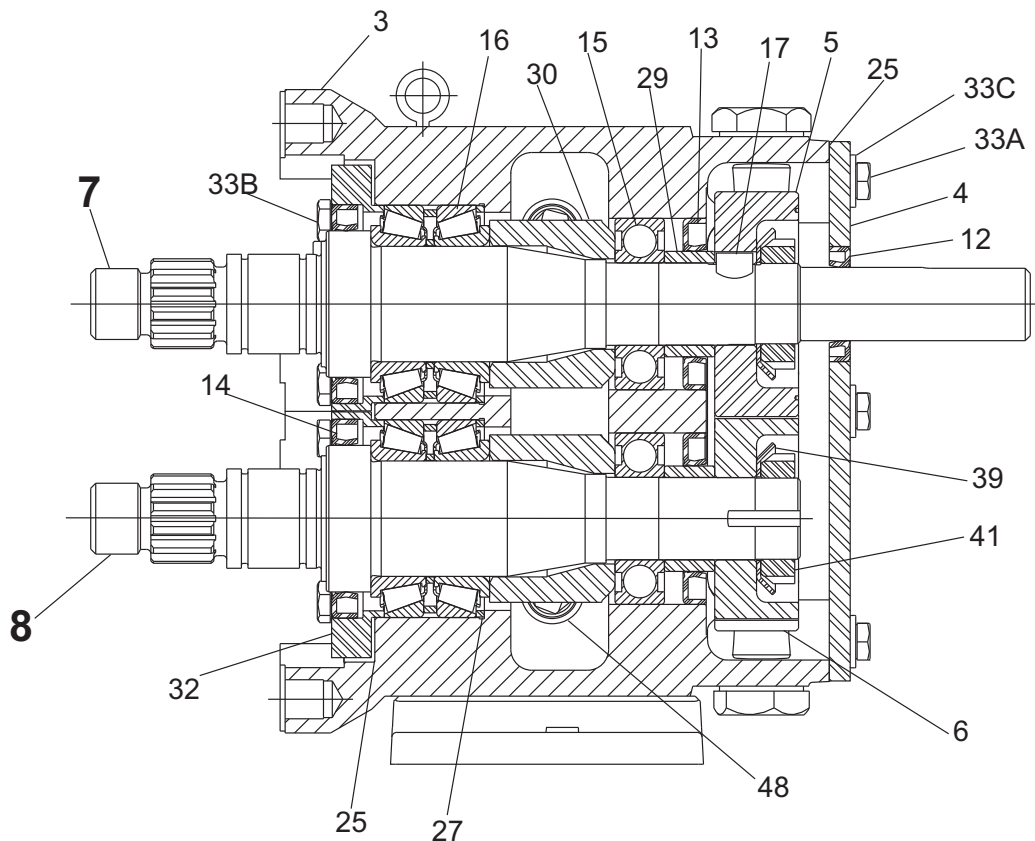
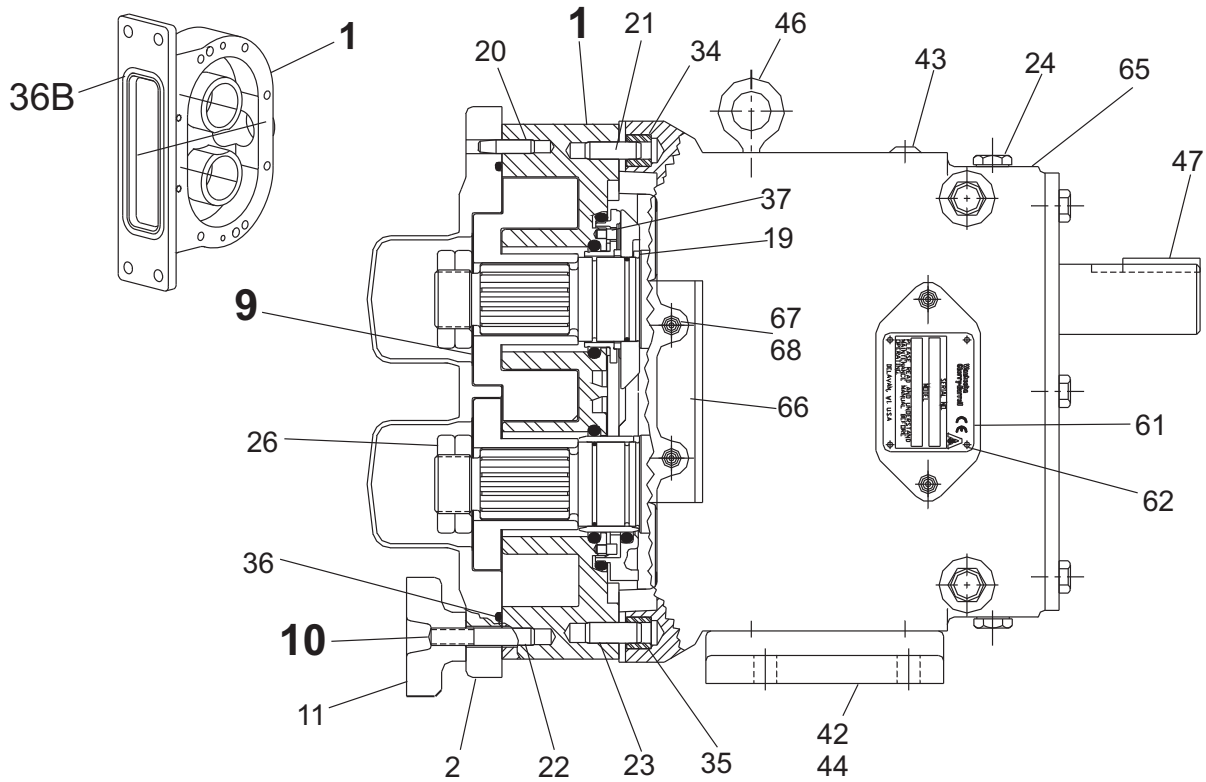
ITEM NO.	DESCRIPTION	QTY. PER PUMP	PART NO.	NOTES
61	Name Plate, Sanitary	1	001061015+	
62	#2 x .125" RHDS	4	30-355	
65	Caution Plate	2	33-62	
66	Warning Label	2	33-63	16
67	030, 033, 040-U1 Grease Fitting, 1/8"	4	BD0092000	
	034-U1 Grease Fitting, 1/8"	4	BD0092100	
68	Plastic Cap, Grease Fitting	4	BD0093000	
	Decal Kit	1	137493+	16

PL5060-CH39a

Notes:

16. Decal kit contains 2 x 121694+ (Caution, Read Manual label); 2 x 33-63 (Small warning label (models 006-040)); 2 x 33-60 (Large warning label (models 060-320)); 1 x 7403951 (SPX name label); 1 x 125115+ (Patent label).

060, 064, 130, 134, 133-U1 Pump Parts



PD100-317

060, 064, 130, 134, 133-U1 Pump Parts

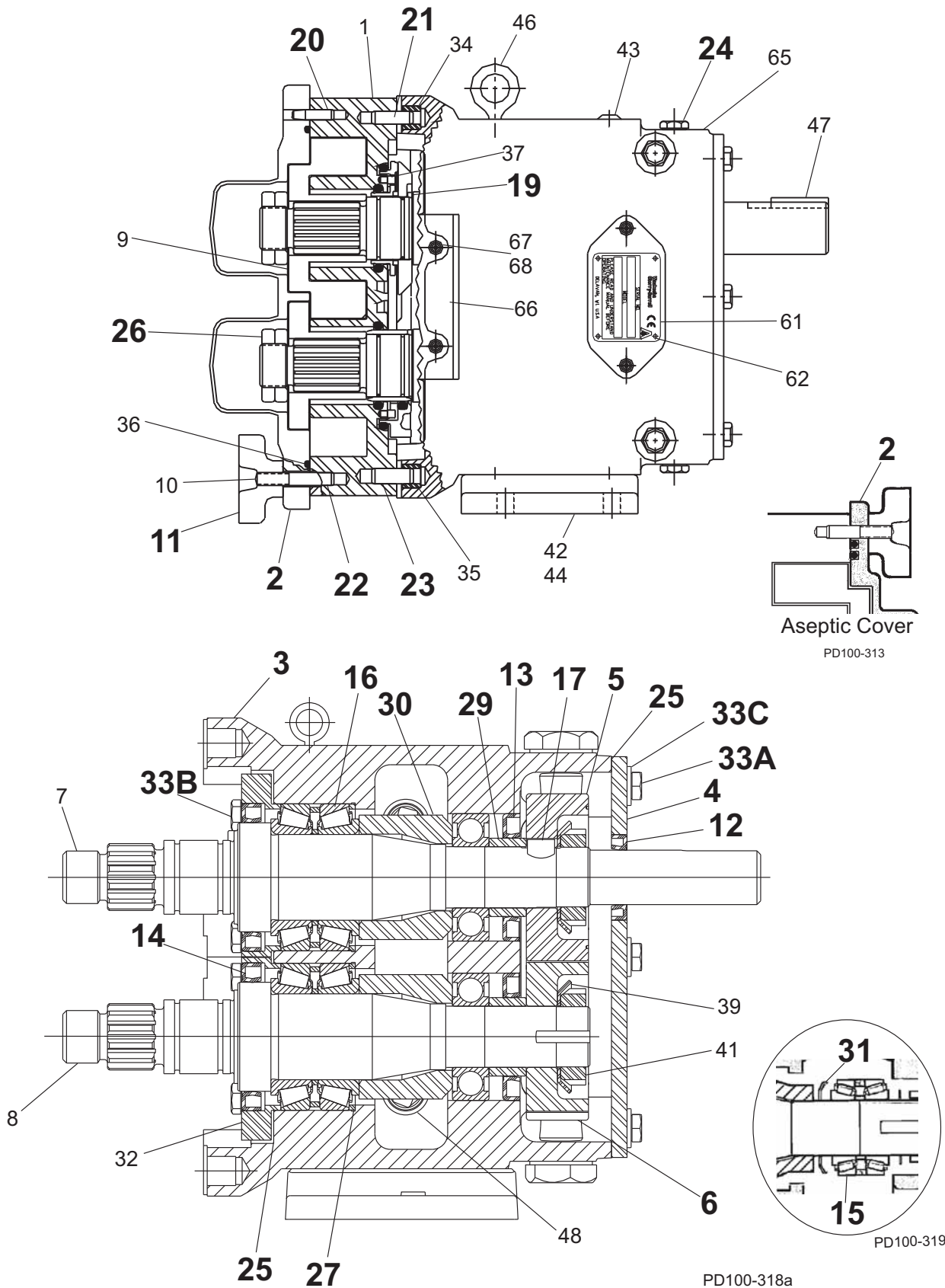
ITEM NO.	DESCRIPTION	QTY. PER PUMP	PART NO.	NOTES
1	060, 064, 130, 133, 134-U1 Pump Body	1	See Note 1	1
7	060, 064-U1 Drive Shaft	1	060008001+	4, 41, 46
	060, 064-U1 Drive Shaft, Optional 17-4PH	1	35145+	41, 46
	130, 134-U1 Drive Shaft	1	130008001+	4, 41, 46
	130, 134-U1 Drive Shaft, Optional 17-4PH	1	35394+	41, 46
	133-U1 Drive Shaft	1	133008001+	4, 41
	133-U1 Drive Shaft, Optional 17-4PH	1	34470+	41, 46
8	060, 064-U1 Short Shaft	1	060009001+	4, 46
	060, 064-U1 Short Shaft, Optional 17-4PH	1	35146+	41, 46
	130, 134-U1 Short Shaft	1	130009001+	4, 46
	130, 134-U1 Short Shaft, Optional 17-4PH	1	35392+	41, 46
	133-U1 Short Shaft	1	133009001+	4
	133-U1 Short Shaft, Optional 17-4PH	1	34471+	
9	060, 064-U1 Rotor, Twin Wing, Alloy 88	2	060010000+	2
	060, 064-U1 Rotor, Twin Wing, 316SS	2	060010200+	2
	060-U1 Rotor, Single Wing, Alloy 88	2	117343+	2, 12, 13
	130, 134-U1 Rotor, Twin Wing, Alloy 88	2	130010000+	2
	130, 134-U1 Rotor, Twin Wing, 316SS	2	130010200+	2
	130-U1 Rotor, Single Wing, Alloy 88	2	117360+	2, 12A, 13
	133-U1 Rotor, Twin Wing, Alloy 88	2	133010020+	2
	133-U1 Rotor, Single Wing, Alloy 88	2	117377+	2, 12B
10A	060-U1 Stud	8	108843+	
10B	060-U1 Stud, Jacketed Cover	8	108846+	
10C	060-U1 Stud Retainer Assembly	1	N/A	5
10D	064-U1 Stud	6	108843+	
	064-U1 Stud	2	0C1050000	
10E	064-U1 Stud, Jacketed Cover	6	108846+	
	064-U1 Stud, Jacketed Cover	2	35556+	
10F	130, 133-U1 Stud	8	130011000+	
10G	130-U1 Stud, Jacketed Cover	8	130011001+	
10H	130, 133-U1 Stud Retainer Assembly	1	N/A	5
10I	134-U1 Stud	6	130011000+	
	134-U1 Stud	2	0C1050000	
10J	134-U1 Stud, Jacketed Cover	6	130011001+	
	134-U1 Stud, Jacketed Cover	2	35556+	

PL5060-CH48

Notes:

- Contact Customer Service with serial number of pump for part number.
- Standard clearances and finishes for rotor part numbers shown. Contact Customer Service for optional clearances and finishes.
- Pumps sold before 1988 also need bearing spacer (item 30) 060055003+ if replacing the original shaft. To confirm part number, contact customer service and provide serial number.
- No longer manufactured, consult Customer Service for upgrade of gear case subassembly.
- Replaces 060010010 straight and 060010090 90° (degree) rotors.
- 12A.Replaces 130010010 straight and 130010090 90° (degree) rotors.
- 12B.Replaces 133010010 straight and 133010090 90° (degree) rotors.
- Single wing rotors cannot be used in Rectangular Flange Inlet pumps.
- Tru-Fit drive shaft is longer than the standard drive shaft listed here. See page 110.
- SPX FLOW now offers shafts with pressed-on bearings. See page 113.

060, 064, 130, 134, 133-U1 Common Parts



060, 064, 130, 134, 133-U1 Common Parts

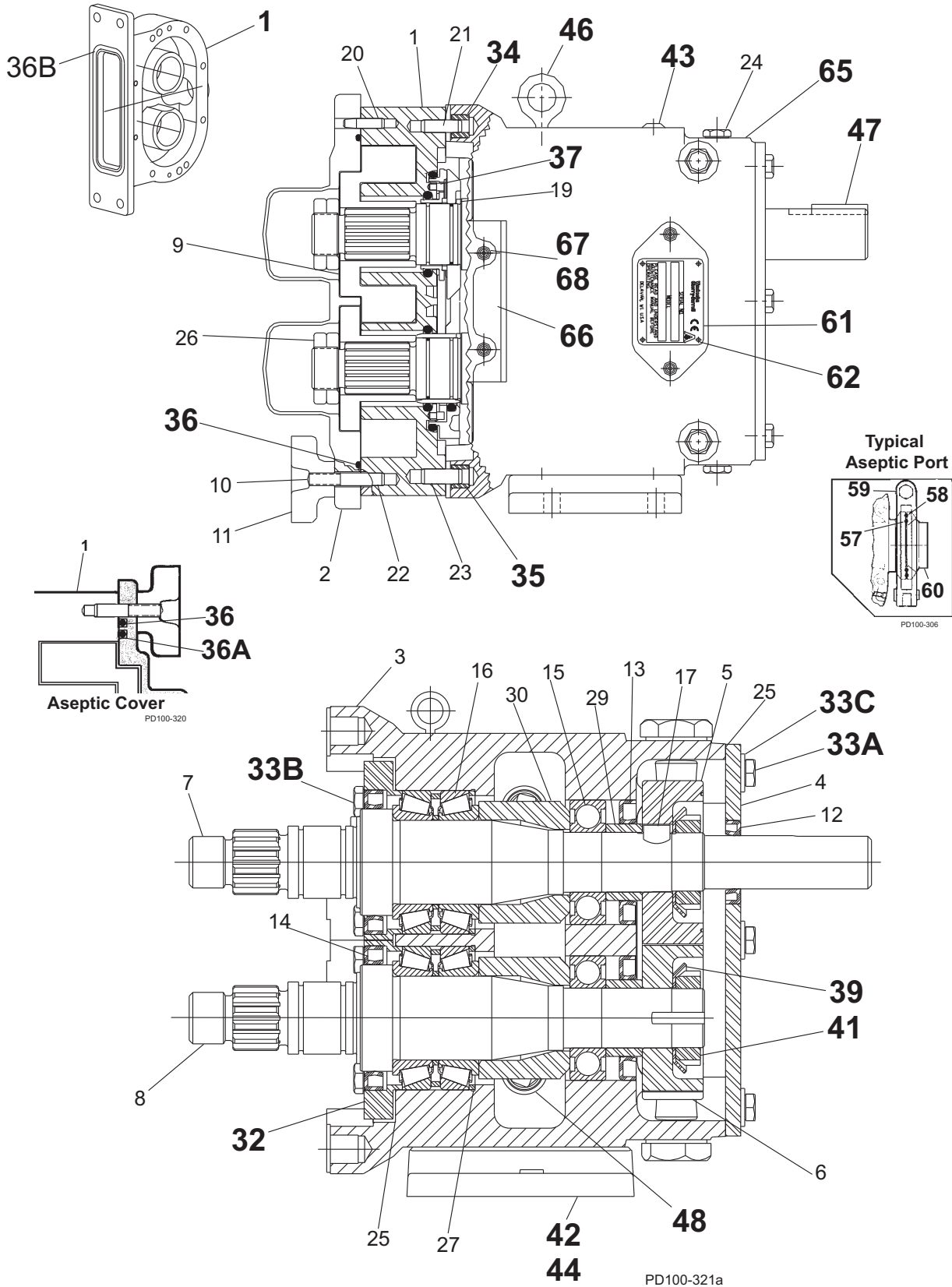
ITEM NO.	DESCRIPTION	QTY. PER PUMP	PART NO.	NOTES
2	060, 064, 130, 134-U1 Pump Cover	1	CD0002S00	
	060, 064, 130, 134-U1 Jacketed Cover	1	CD0002J10	
	133-U1 Pump Cover	1	133002020+	
	Pump Cover Vented - Complete Assembly			1
3	060-U1 Gear Case Assembly, CI	1	060108000-C	6
	060-U1 Gear Case Assembly, SS	1	060108004-C	6
	064-U1 Gear Case Assembly, CI	1	064108000-C	6
	064-U1 Gear Case Assembly, SS	1	064108004-C	6
	130-U1 Gear Case Assembly, CI	1	130108000-C	6
	130-U1 Gear Case Assembly, SS	1	130108004-C	6
	133-U1 Gear Case Assembly, CI	1	133108000-C	6
	133-U1 Gear Case Assembly, SS	1	133108004-C	6
	134-U1 Gear Case Assembly, CI	1	134108000-C	6
	134-U1 Gear Case Assembly, SS	1	134108004-C	6
4	Gear Case Cover, Steel	1	070106000+	
	Gear Case Cover, SS; Optional	1	102282+	
5	Gear, Drive Shaft, Spur	1	107404+	
6	Gear, Short Shaft, Spur	1	107404+	
11	Wing Nut	8	105852+	
	Hex Nut, Optional	8	108371+	
12	Oil Seal, Gear Case Cover	1	000030012+	
13	Oil Seal, Gear Case Rear	2	000030011+	
14	Grease Seal, Bearing Retainer	2	000030009+	7
15	Bearing, Rear	2	107186+	8
16	Bearing, Front	2	060036000+	
17	Key, Gear	2	060037000+	
19	Drive Pin, Seal Seat and Sleeve	2	CD0126000	
20	Dowel Pin, Cover Side, .308" x .85"	1	137002+	43
21	Dowel Pin, Gear Case Side, .433" x 1.0"	1	124584+	44
22	Dowel Pin, Cover Side, .370" x .85"	1	137003+	43
23	Dowel Pin, Gear Case Side, .495" x 1.0"	1	124586+	44
24	Oil Plug, M20 x 1.5"	5	115798+	40
	Oil Level Indicator, M20 x 1.5	1	115799+	
	Oil Level Indicator, ATEX, M20 x 1.5	1	131417+	
25	Silicone Sealant	1	000142301+	
26	Jam Nut, Rotor	4	060052001+	
	Jam Nut, Rotor, WM-88		060052001-WM88	45
27	Shim Kit	2	117891+	
29	Spacer, Gear to Rear Bearing	2	107187+	8
30	Bearing Spacer	2	060055003+	9

PL5060-CH49

Notes:

- Please configure in eSales or contact Customer Service.
- Gear case assembly includes timing gears and 316SS shafts.
- For bearing isolator kit, and for bearings/grease seals for older pumps, see page 111.
- Pumps shipped appx. 12/1999 and earlier, see "060, 064, 130, 134, 133-U1 Rear Bearing and Spacer" on page 81.
- Pumps sold before 1988 need bearing spacer (item 30) 060055003+ if replacing the original shaft (items 7/8). To confirm part number, contact customer service and provide serial number.
- Pumps shipped prior to 5/15/03 used plug w/washer, p/n 000046004+, qty. 6. Verify date of manufacture to identify correct part needed.
- Exposed length of dowel pin: .444" (11.3 mm)
- Exposed length of dowel pin: .563" (14.3 mm)
- For special service with high chloride products.

060, 064, 130, 134, 133-U1 Common Parts, cont'd



060, 064, 130, 134, 133-U1 Common Parts, cont'd

ITEM NO.	DESCRIPTION	QTY. PER PUMP	PART NO.	NOTES
31	Grease Retainer, Rear Bearing	2	STD091002	
32	Bearing Retainer, Front	2	123531+	7
	Bearing Retainer, SS	2	101812+	7
33A	3/8-16 x .75" HHCS, STD Gear Case Cover	6	30-314	
	3/8-16 x .75" HHCS, SS Gear Case	6	30-50	
33B	3/8-16 x 1.25" HHCS, Brg. Ret., Std. Gear Case	8	30-351	
	3/8-16 x 1.25" HHCS, Brg. Ret. SS Gear Case	8	30-60	
33C	3/8" Flat Washer	6	43-189	
34	Dowel Bushing, Upper	1	CD0116000	
35	Dowel Bushing, Lower	1	CD0116100	
* 36	O-Ring, Pump Cover, Buna N	1	N70272	
	O-Ring, Pump Cover, EPDM	1	E70272	
	O-Ring, Pump Cover, FKM	1	V70272	
	O-Ring, Pump Cover, Silicone	1	S75272	
	133-U1 O-Ring Cord, EPDM	1	133117012+	11
	133-U1 O-Ring Cord, FKM	1	133117014+	11
	133-U1 O-Ring Cord, Silicone	1	133117013+	11
* 36A	133-U1 O-Ring, Pump Cover, Inner, EPDM	1	133117002+	11
	133-U1 O-Ring, Pump Cover, Inner, FKM	1	133117004+	11
	133-U1 O-Ring, Pump Cover, Inner, Silicone	1	133117003+	11
* 36B	064-U1 O-Ring, Rectangular Flange, Buna N	1	35360+	14
	064-U1 O-Ring, Rectangular Flange, Buna N	1	N70366	14
	134-U1 O-Ring, Rectangular Flange, Buna N	1	N70272	14
	134-U1 O-Ring, Rectangular Flange, Buna N	1	N70369	14
37	Stop Pin, Seal	2	223126000+	
39	Lockwasher, Gear	2	STD136009	
41	Locknut, Gear	2	STD236009	
42	Gear Case Shim, CI	1	070110000+	
	Gear Case Shim, SS; Optional	1	102286+	
	Pump Pedestal, 5.5", Optional	1	CD0110SM5	
	Pump Pedestal, 10", Optional	1	CD0110SM1	
43	Plastic Cap Plug	6	000121001+	
44	5/16-18 x 1" SHCS	4	30-275	
45	060-064-U1 Body Retaining Screw	2	30-319	16
	130-133-134-U1 Body Retaining Screw	2	30-423	16
46	Eye Bolt	2	30-360	
47	Key, Coupling - 3/8 x 3/8 x 1-5/8"	1	000037003+	

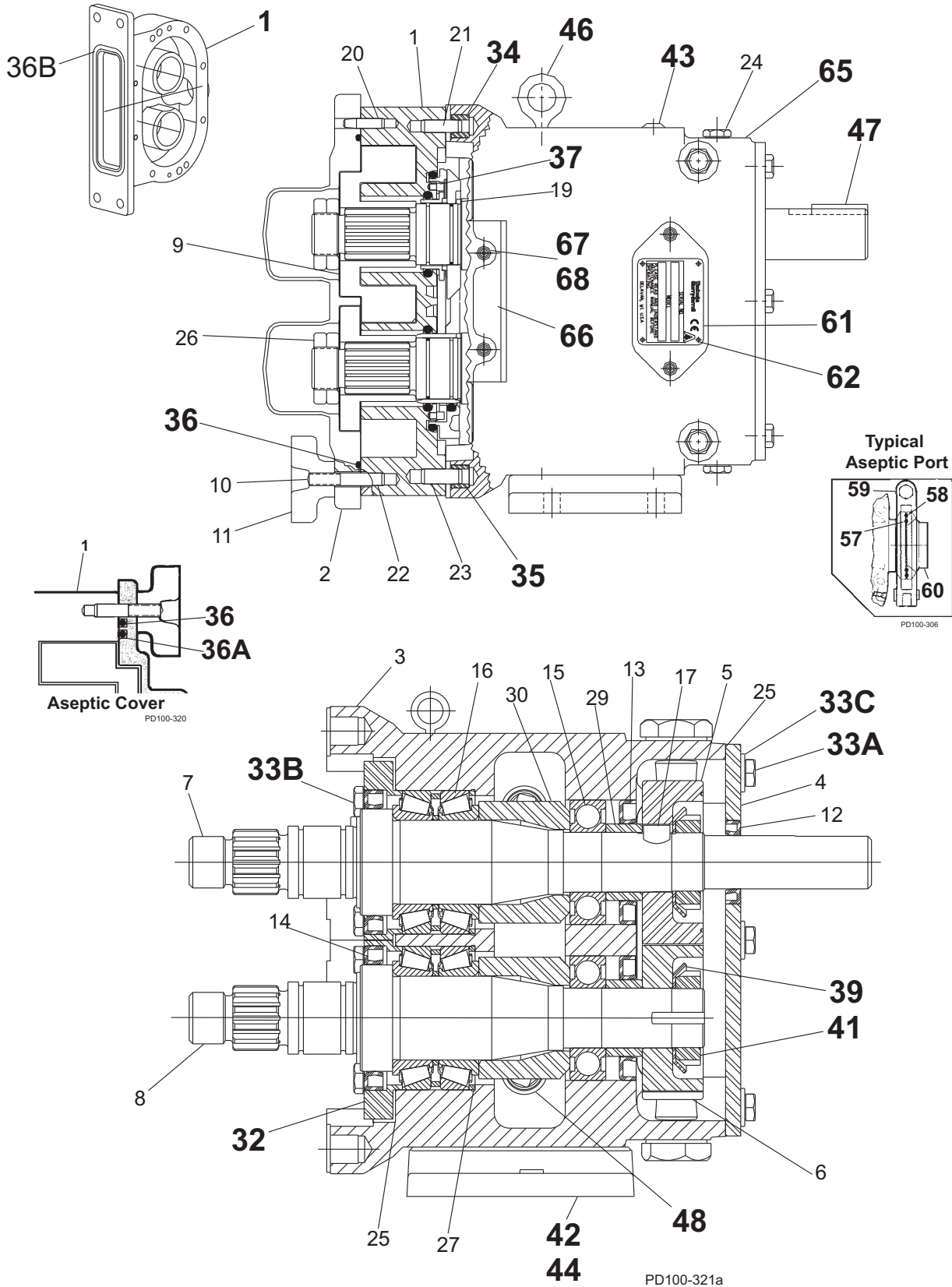
PL5060-CH50

Notes:

*** Recommended Spare Parts**

- 7. For bearing isolator kit, and for bearings/grease seals for older pumps, see page 111.
- 11. Used on 133-U1 only.
- 14. New O-rings N70366 (064) and N70369 (134) introduced in 2001. Fits close to inlet opening.
- 16. Body retaining screws can only be used with a body and a gear case that have holes for this purpose. Current pump design includes holes for the body retaining screws.

060, 064, 130, 134, 133-U1 Common Parts, cont'd



060, 064, 130, 134, 133-U1 Common Parts, cont'd

ITEM NO.	DESCRIPTION	QTY. PER PUMP	PART NO.	NOTES
48	Cleanout Plug	2	41013+	15
* 57	133-U1 O-Ring, Port, Inner, EPDM	2	E70041	11
	133-U1 O-Ring, Port, Inner, Silicone	2	S75041	11
* 58	133-U1 O-Ring, Port, Outer, EPDM	2	E70043	11
	133-U1 O-Ring, Port, Outer, Silicone	2	S75043	11
* 59	133-U1 3" 131 "I" Line Clamp	2	0345223+	11
* 60	133-U1 Aseptic Ferrule, 3"	2	133267000+	11
61	Name Plate, Sanitary	1	001061015+	
62	#2 x .125" RHDS	4	30-355	
65	Caution Plate	2	121694+	
66	Warning Label	2	33-60	16
67	060, 130, 133-U1 Grease Fitting, 1/8" (straight)	4	BD0092000	
	064-134-U1 Grease Fitting, 1/8" (angled)	4	BD0092100	
68	Plastic Cap, Grease Fitting	4	BD0093000	
	Decal Kit	1	137493+	16

PL5060-CH50a

Notes:

*** Recommended Spare Parts**

- Used on 133-U1 only.
- New O-rings N70366 (064) and N70369 (134) introduced in 2001. Fits close to inlet opening.
- For an older gearcase without a threaded plug hole, use plug p/n 000121001+
- Decal kit contains 2 x 121694+ (Caution, Read Manual label); 2 x 33-63 (Small warning label (models 006-040)); 2 x 33-60 (Large warning label (models 060-320)); 1 x 7403951 (SPX name label); 1 x 125115+ (Patent label).

060, 064, 130, 134, 133-U1 Rear Bearing and Spacer

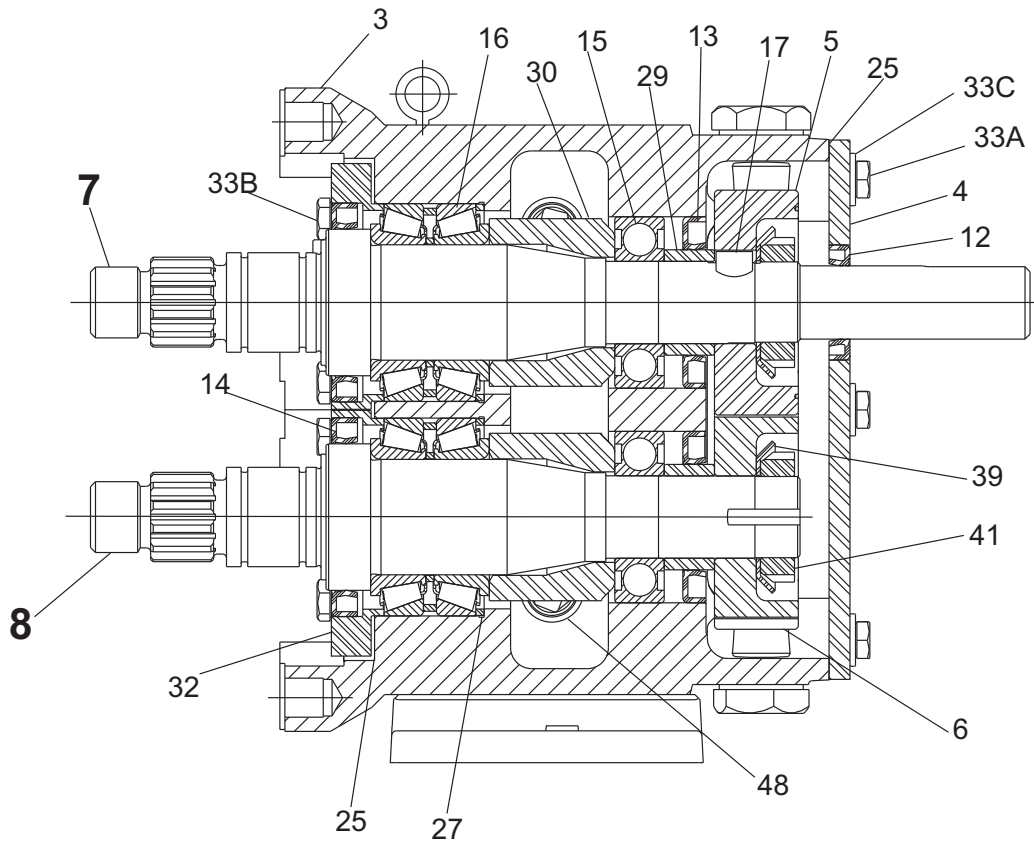
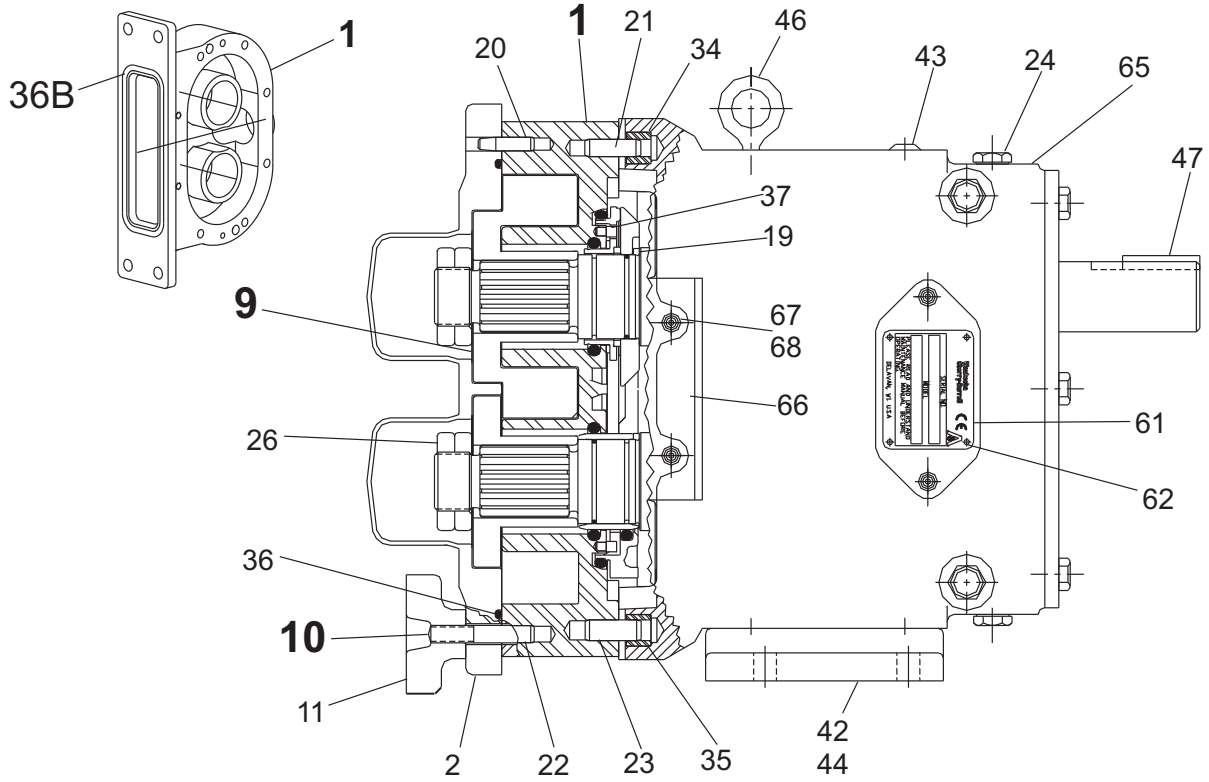
Item No.	Description	Part no. for pumps manufactured:		Qty per pump
		before 12/1999	after 12/1999 (New)	
15	Bearing, Rear	060 035 000 (obsolete); use 107186+ with 107187+ (see kit 107188+)	107186+	2
29	Spacer, Gear to Rear Bearing	060055000+; use only with existing bearing 060 035 000 (obsolete)	107187+	2
N/A	Bearing and Spacer Kit (107186+ x1 and 107187+ x1)	107188+: use if replacing (obsolete) rear bearing 060 035 000		2

PL5060-CH171

Notes:

- When replacing the obsoleted rear bearing 060 035 000 with new rear bearing 107186+, you must also replace the old shorter gear spacer 060055000+, with new longer gear spacer 107187+. See note 2.
- The 107188+ kit consists of one rear bearing 107186+ and one gear spacer 107187+, which have replaced obsoleted rear bearing 060 035 000 and old gear spacer 060055000+.
- The old 060055000+ gear spacer was used in pumps before 12/1999. It is available as a service part only for use with existing (obsolete) bearing 060 035 000. It will not fit with new rear bearing 107186+.
- Dates listed are estimates. To confirm part number, contact customer service and provide serial number.

220, 223, 224-U1 Pump Parts



PD100-317

220, 223, 224-U1 Pump Parts

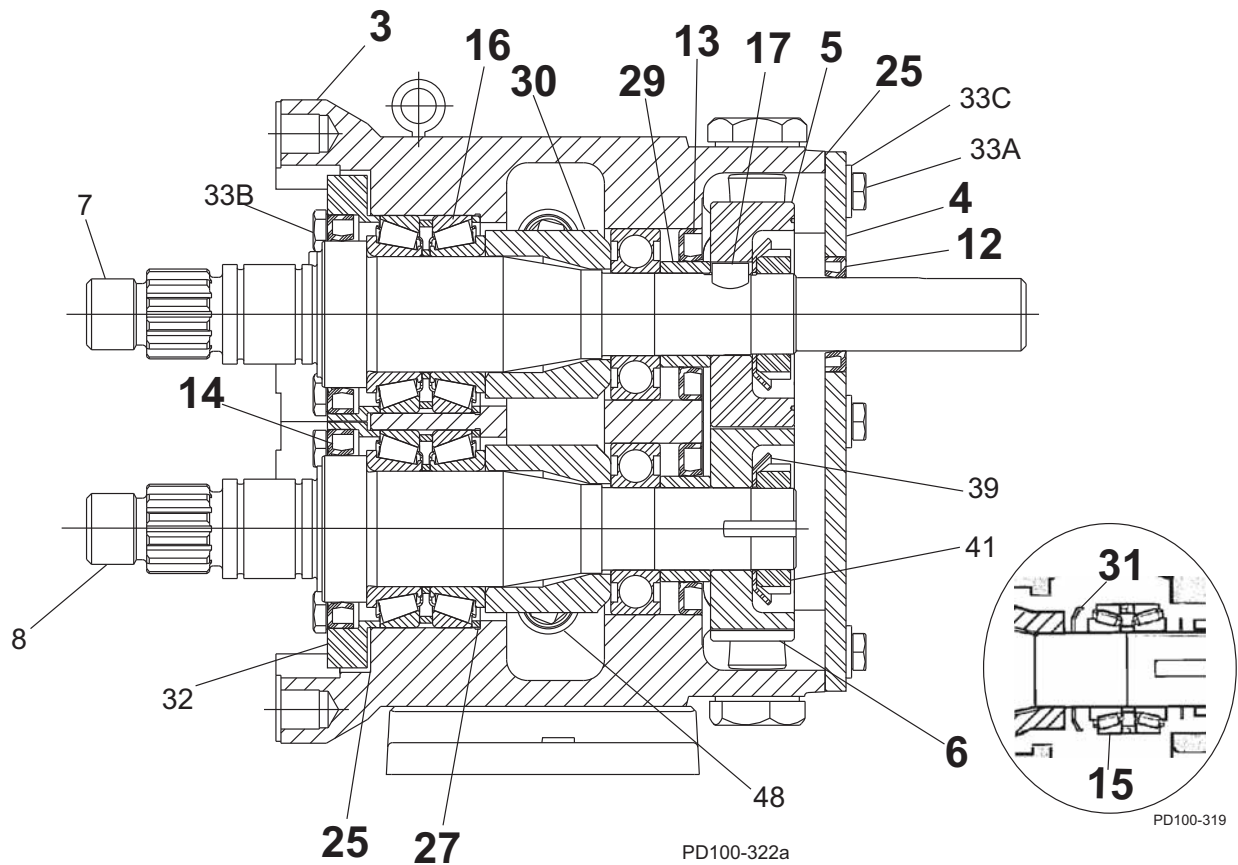
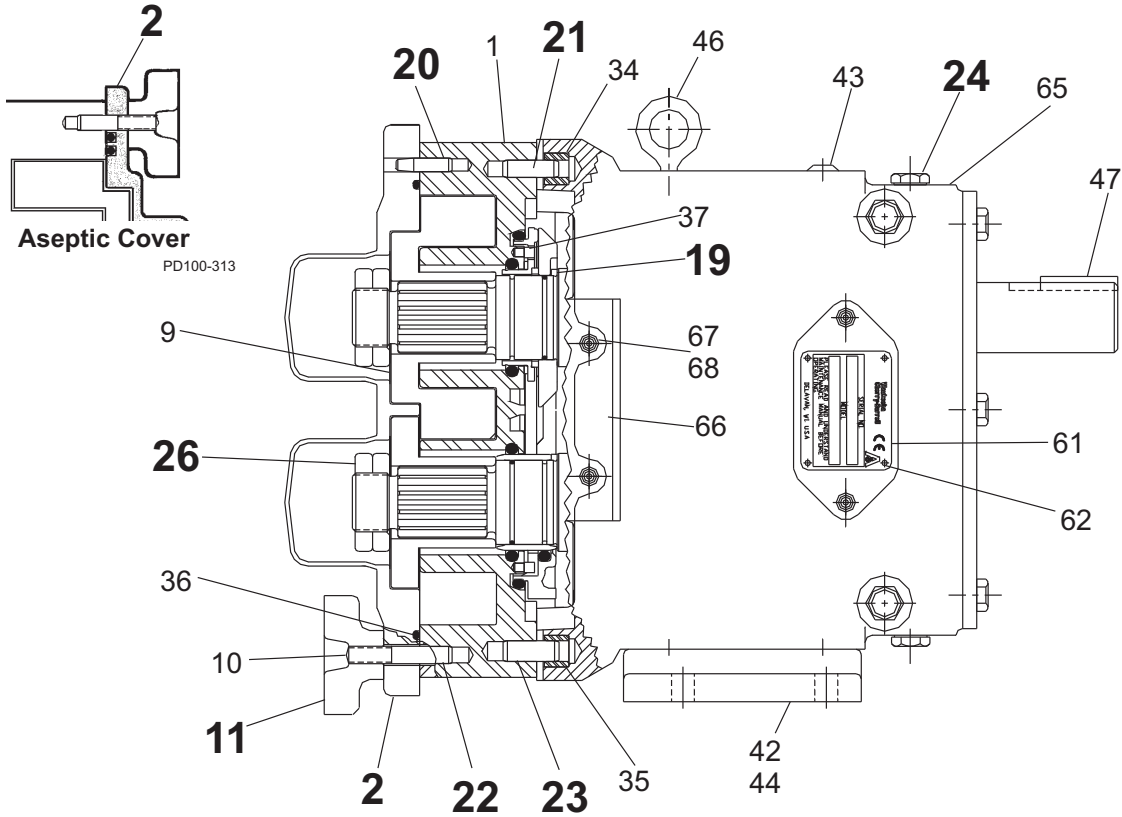
ITEM NO.	DESCRIPTION	QTY. PER PUMP	PART NO.	NOTES
1	220-U1 Pump Body	1	See Note 1	1
	220-U1 Pump Body with Flush	1	See Note 1	1
	224-U1 Rectangular Flange Inlet Body	1	See Note 1	1
	224-U1 Rect. Flange Inlet Body with Flush	1	See Note 1	1
	223-U1 Pump Body	1	223001020+	
7	220, 224-U1 Drive Shaft, Std.	1	220008001+	4, 46
	220, 224-U1 Drive Shaft, Optional 17-4PH	1	35349+	46
	223-U1 Drive Shaft	1	223008001+	4, 46
	223-U1 Drive Shaft, Optional 17-4PH	1	35726+	46
8	220, 224-U1 Short Shaft, Std.	1	220009001+	4, 46
	220, 224-U1 Short Shaft, Optional 17-4PH	1	35350+	46
	223-U1 Short Shaft	1	223009001+	4, 46
	223-U1 Short Shaft, Optional 17-4PH	1	35727+	46
9	220, 224-U1 Rotor, Twin Wing, Alloy 88	2	220010000+	2
	220, 224-U1 Rotor, Twin Wing, 316SS	2	220010200+	2
	220, 224-U1 Rotor, Single Wing, Alloy 88	2	117391+	2, 12, 13
	223-U1 Rotor, Twin Wing, Alloy 88	2	223010020+	2
10A	220-U1 Stud	8	108844+	
10B	220-U1 Stud, Jacketed Cover	8	108847+	
10C	224-U1 Stud	6	108844+	
	224-U1 Stud	2	35550+	
10D	224-U1 Stud, Jacketed Cover	6	108847+	
	224-U1 Stud, Jacketed Cover	2	36144+	
	Stud Retainer Assembly	1	N/A	5

PL5060-CH53

Notes:

- Contact Customer Service with serial number of pump for part number.
- Standard clearance and finish Part Number shown. Contact Customer Service for optional clearances and finishes.
- Pumps shipped starting approx. 1988. Pumps sold before 1988 also need bearing spacer 40752+ (item 30) if they have never made a change to the orig. pump.
- No longer manufactured, consult Customer Service for upgrade of gear case subassembly.
- Replaces 220010010 straight and 220010090 90° rotors.
- Single wing rotors cannot be used in rectangular flange Inlet pumps.
- Tru-Fit drive shaft is longer than the standard drive shaft listed here. See page 110.
- SPX FLOW now offers shafts with pressed-on bearings. See page 113.

220, 223, 224-U1 Common Parts



220, 223, 224-U1 Common Parts

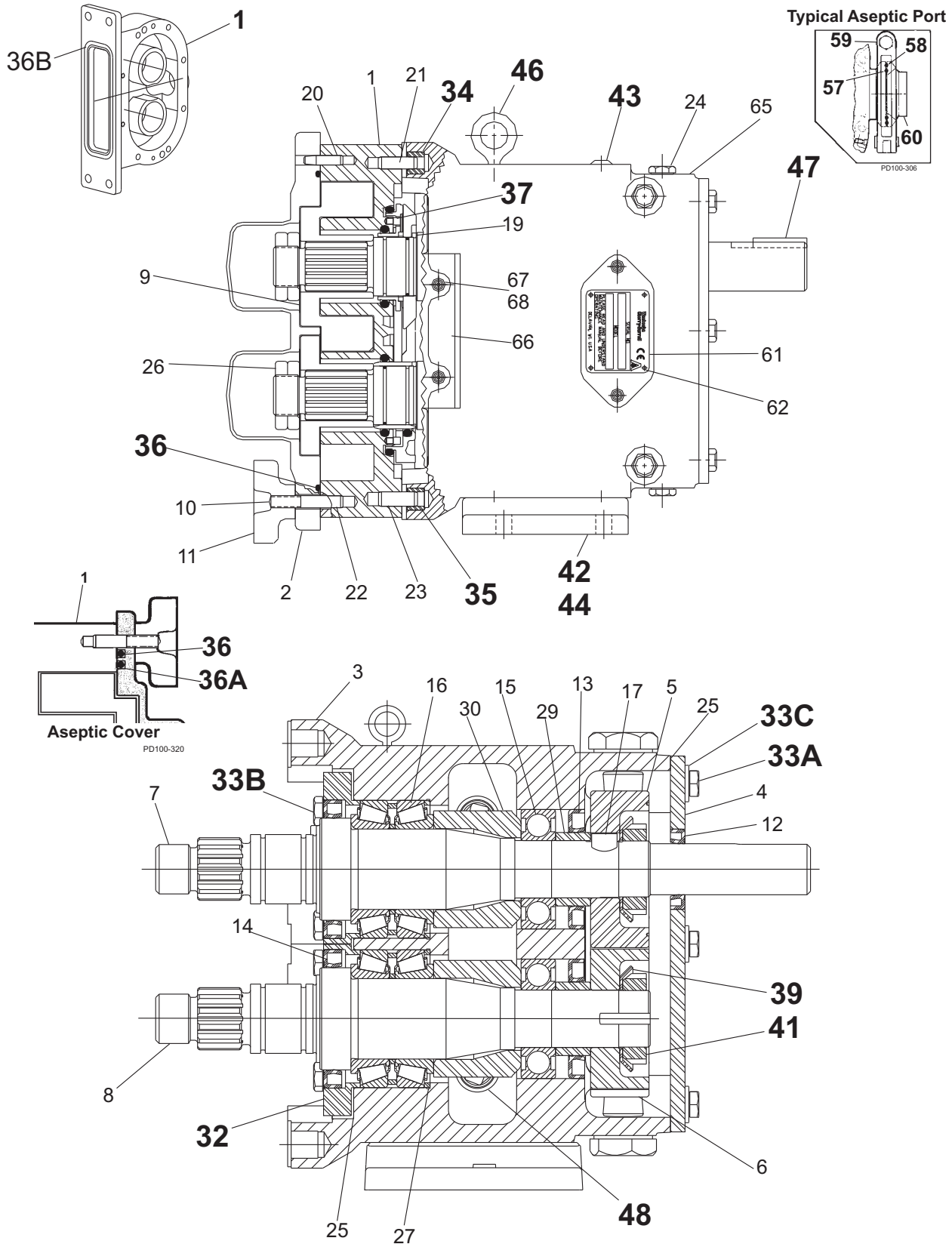
ITEM NO.	DESCRIPTION	QTY. PER PUMP	PART NO.	NOTES
2	220, 224-U1 Pump Cover	1	GD0002S00	
	220, 224-U1 Jacketed Cover	1	GD0002J10	
	223-U1 Pump Cover	1	223002020+	
	Pump Cover Vented - Complete Assembly			1
3	220-U1 Gear Case Assembly, CI	1	220108000-C	42
	220-U1 Gear Case Assembly, SS; Optional	1	220108004-C	42
	223-U1 Gear Case Assembly, CI	1	223108000-C	42
	223-U1 Gear Case Assembly, SS; Optional	1	223108004-C	42
	224-U1 Gear Case Assembly, CI	1	224108000-C	42
	224-U1 Gear Case Assembly, SS; Optional	1	224108004-C	42
4	Gear Case Cover, Steel	1	230106000+	
	Gear Case Cover, SS; Optional	1	102283+	
5	Gear, Drive Shaft, Spur	1	110932+	
6	Gear, Short Shaft, Spur	1	110932+	
11	Wing Nut	8	105853+	
	Hex Nut, optional	8	108372+	
12	Oil Seal, Gear Case Cover	1	STD030006	
13	Oil Seal, Gear Case Rear	2	STD119002	
14	Grease Seal, Bearing Retainer	2	121681+	7
15	Bearing, Rear	2	200035000+	
16	Bearing, Front	2	200036000+	
17	Key, Gear	2	200037000+	
19	Drive Pin, Seal Seat and Sleeve	2	CD0126000	
20	220, 223-U1 Dowel Pin, Cover Side, .433" x .85"	1	137004+	43
	224-U1 Dowel Pin, Cover Side, .495" x .85"	1	137005+	43
21	220, 223-U1 Dowel Pin, Gear Case Side, .433" x 1.0"	1	124584+	44
	224-U1 Dowel Pin, Gear Case Side, .495" x 1.0"	1	124586+	44
22	220, 223-U1 Dowel Pin, Cover Side, .495" x .85"	1	137005+	43
	224-U1 Dowel Pin, Cover Side, .433" x .85"	1	137004+	43
23	220, 223-U1 Dowel Pin, Gear Case Side, .495" x 1.0"	1	124586+	44
	224-U1 Dowel Pin, Gear Case Side, .433" x 1.0"	1	124584+	44
24	Oil Plug, M20 x 1.5"	5	115798+	40
	Oil Level Indicator, M20 x 1.5"	1	115799+	
25	Silicone Sealant	1	000142301+	
26	Jam Nut, Rotor	4	GD0052001	
27	Shim Kit	2	117892+	
29	Spacer, Gear to Rear Bearing	2	40878+	
30	Bearing Spacer	2	40752+	
31	Grease Retainer, Rear Bearing	2	STD091001	

PL5060-CH54

Notes:

1. Please configure in eSales or contact Customer Service.
7. For bearing isolator kit, and for bearings/grease seals for older pumps, see page 111.
8. Used in pumps manufactured after approx. 06/1993.
40. Pumps shipped prior to 5/15/03 used plug w/washer, p/n 000046004+, qty. 6. Verify date of manufacture.
42. For pumps shipped prior to 5/15/03: Consult Customer Service and provide serial number for upgrade of gear case assembly.
43. Exposed length of dowel pin: .444" (11.3 mm)
44. Exposed length of dowel pin: .563" (14.3 mm)

220, 223, 224-U1 Common Parts, cont'd



PD100-323a

220, 223, 224-U1 Common Parts, cont'd

ITEM NO.	DESCRIPTION	QTY. PER PUMP	PART NO.	NOTES
32	Bearing Retainer, Front; STD.	2	123532+	7
	Bearing Retainer, Front; SS	2	101813+	7
33A	3/8-16 x .75" HHCS, Std gear case	6	30-314	
	3/8-16 x .75" HHCS, SS Gear case	6	30-50	
33B	3/8-16 x 1.25" SHCS, Brg Ret. Std gear case	8	30-351	
	3/8-16 x 1.25" SHCS, Brg Ret., SS Gear case	8	30-60	
33C	3/8" Flat Washer, Std gear case	6	43-189	
34	Dowel Bushing, Upper	1	CD0116000	
35	Dowel Bushing, Lower	1	CD0116100	
* 36	O-Ring, Pump Cover, Buna N	1	GD0117000	
	O-Ring, Pump Cover, EPDM	1	GD0117002	
	O-Ring, Pump Cover, FKM	1	GD0117V00	
	O-Ring, Pump Cover, Silicone	1	GD0117SC0	
* 36A	223-U1 O-Ring, Pump Cover, Inner, EPDM	1	223117002+	11
	223-U1 O-Ring, Pump Cover, Inner, FKM	1	V70278	11
	223-U1 O-Ring, Pump Cover, Inner, Silicone	1	223117003+	11
* 36B	224-U1 O-Ring, Rectangular Flange	1	GD0117000	12
	224-U1 O-Ring, Rectangular Flange	1	N70376	12
37	Stop Pin, Seal	2	223126000+	
39	Lockwasher, Gear	2	STD136011	
41	Locknut, Gear	2	STD236011	
42	Gear Case Shim, CI	1	230110000+	
	Gear Case Shim, SS	1	102287+	
	Pump Pedestal, 9"	1	GD0110SM9	
	Pump Pedestal, 13"	1	GD0110SM1	
43	Plastic Cap Plug	8	000121001+	
44	1/2-13 x 2" SHCS, Std gear case	4	30-111	
	1/2-13 x 2" SHCS, SS gear case	4	30-44	
45	Body Retaining Screw	2	30-499	
46	1/2-13 Eye Bolt	2	30-360	
47	Key, Coupling - 1/2 x 1/2 x 1"	1	000037004+	
48	Cleanout Plug	2	41013+	15
* 57	223-U1 O-Ring, Port, Inner	2	E70154	11
* 58	223-U1 O-Ring, Port, Outer	2	E70158	11
* 59	223-U1 4" 13MHMV "S" Clamp	2	119-87	
* 60	223-U1 Aseptic Ferrule, 4"	2	GGA267000	

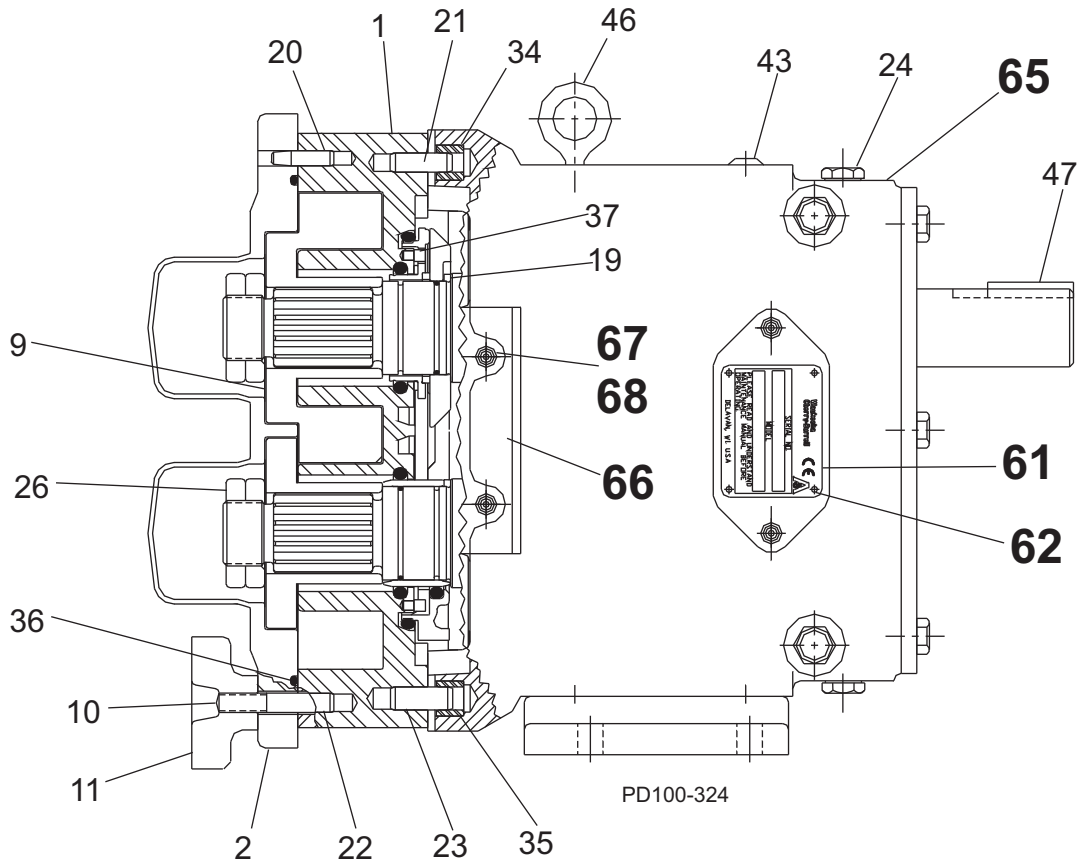
PL5060-CH55

Notes:

*** Recommended Spare Parts**

- 7. For bearing isolator kit, and for bearings/grease seals for older pumps, see page 111.
- 11. Used on 223-U1 only.
- 12. New O-ring N70376 introduced in 2001. Fits close to inlet opening.
- 15. For an older gearcase without a threaded plug hole, use plug p/n BD0121100+

220, 223, 224-U1 Common Parts, cont'd



220, 223, 224-U1 Common Parts, cont'd

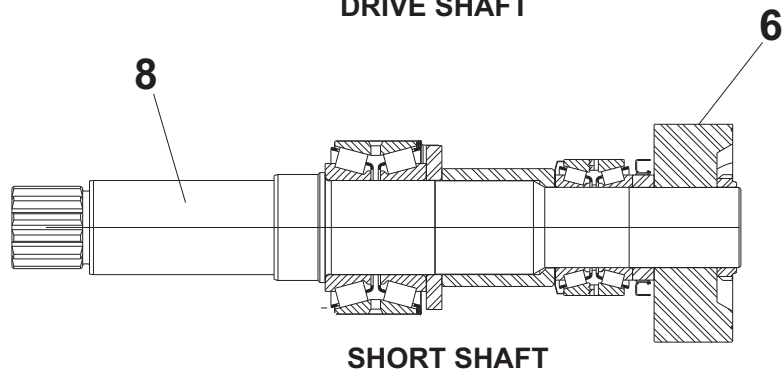
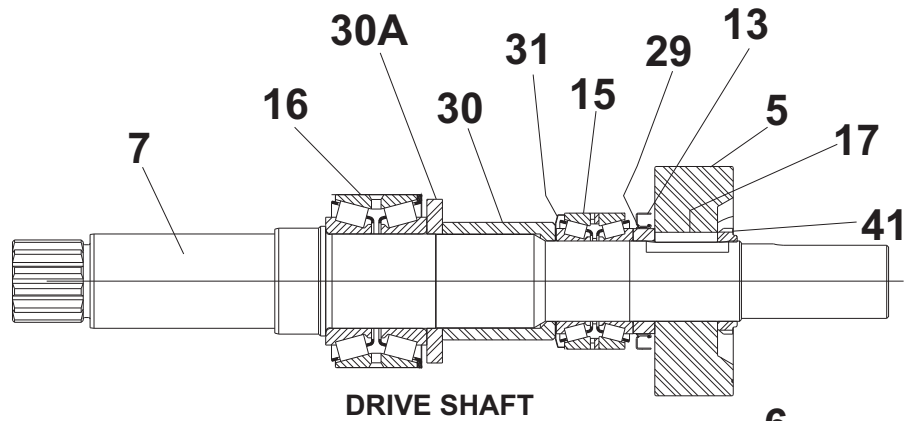
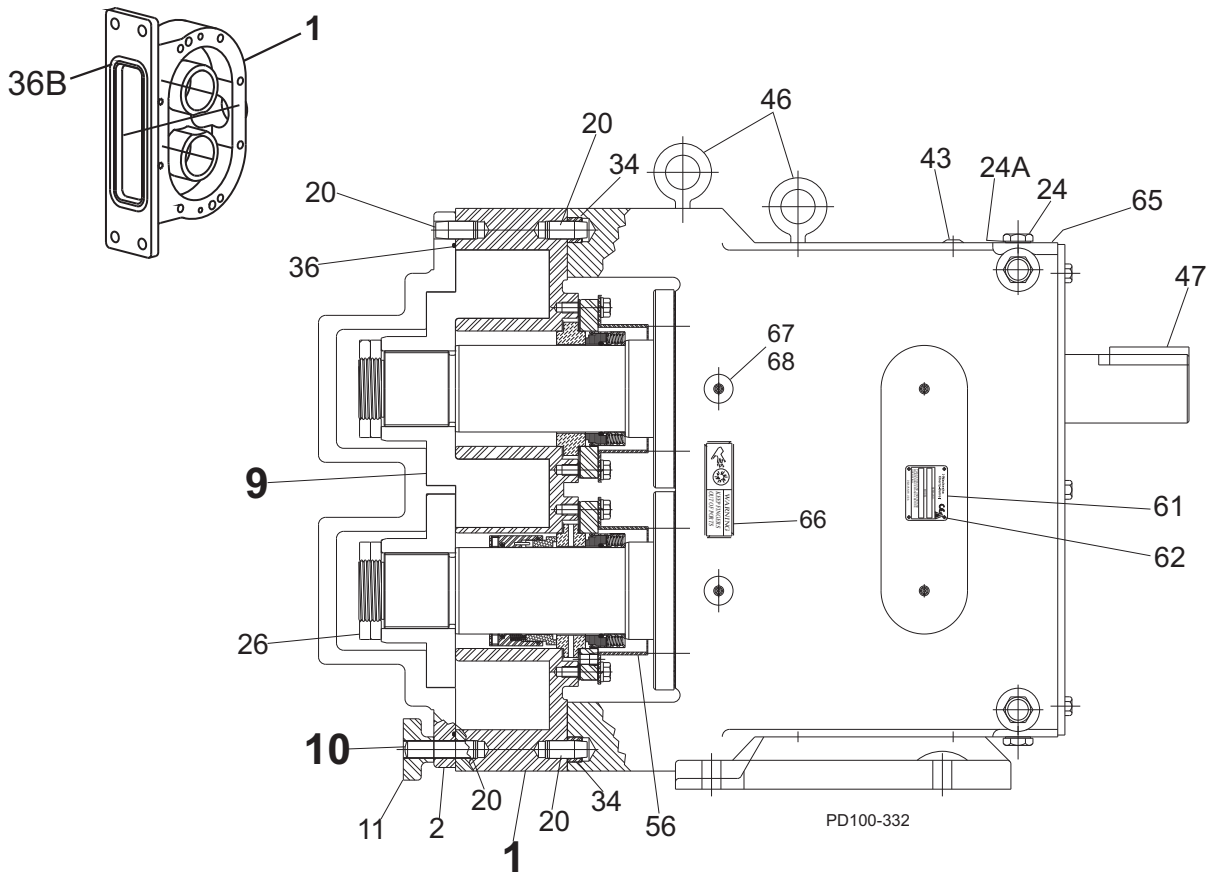
ITEM NO.	DESCRIPTION	QTY. PER PUMP	PART NO.	NOTES
61	Name Plate, Sanitary	1	001061015+	
62	#2 x .125" RHDS	4	30-355	
65	Caution Plate	2	33-62	
66	Warning Label	2	33-60	16
67	220-223-U1 Grease Fitting, 1/8"	4	BD0092000	
	224-U1 Grease Fitting, 1/8"	4	BD0092100	
68	Plastic Cap, Grease Fitting	4	BD0093000	
	Decal Kit	1	137493+	16

PL5060-CH56

Notes:

16. Decal kit contains 2 x 121694+ (Caution, Read Manual label); 2 x 33-63 (Small warning label (models 006-040)); 2 x 33-60 (Large warning label (models 060-320)); 1 x 7403951 (SPX name label); 1 x 125115+ (Patent label).

320, 323, 324-U1 Pump Parts



PD100-331a

320, 323, 324-U1 Pump Parts

ITEM NO.	DESCRIPTION	QTY. PER PUMP	PART NO.	NOTES
1	320-324-U1 Pump Body	1	See Note 1	1
	323-U1 Pump Body	1	323001020+	
7	Drive Shaft, Std.	1	113518+	4, 43, 46
	Drive Shaft, Optional 17-4PH	1	113520+	4, 43, 46
	Drive Shaft Kit, Std., prior to 7/30/01	1	113611+	5A, 43, 46
	Drive Shaft Kit, Optional 17-4PH, prior to 7/30/01	1	113613+	5A, 43, 46
8	Short Shaft, Std.	1	113519+	4, 46
	Short Shaft, Optional 17-4PH	1	113521+	4, 46
	Short Shaft Kit, Std., prior to 7/30/01	1	113612+	5A, 46
	Short Shaft Kit, Optional 17-4PH, prior to 7/30/01	1	113614+	5A, 46
9	320-324-U1 Rotor, Twin Wing, Alloy 88	2	320010000+	2
	320-324-U1 Rotor, Twin Wing, 316SS	2	320010200+	2
	323-U1 Rotor, Twin Wing, Alloy 88	2	323010000+	2
10	320-323-U1 Stud, Cover, Long	4	111291+	4
	324-U1 Stud, Long	4	111291+	
	324-U1 Stud, Short	4	40699+	
10A	320-323-U1 Stud, Cover, Short (not used on 324)	4	111292+	

PL5060-CH59

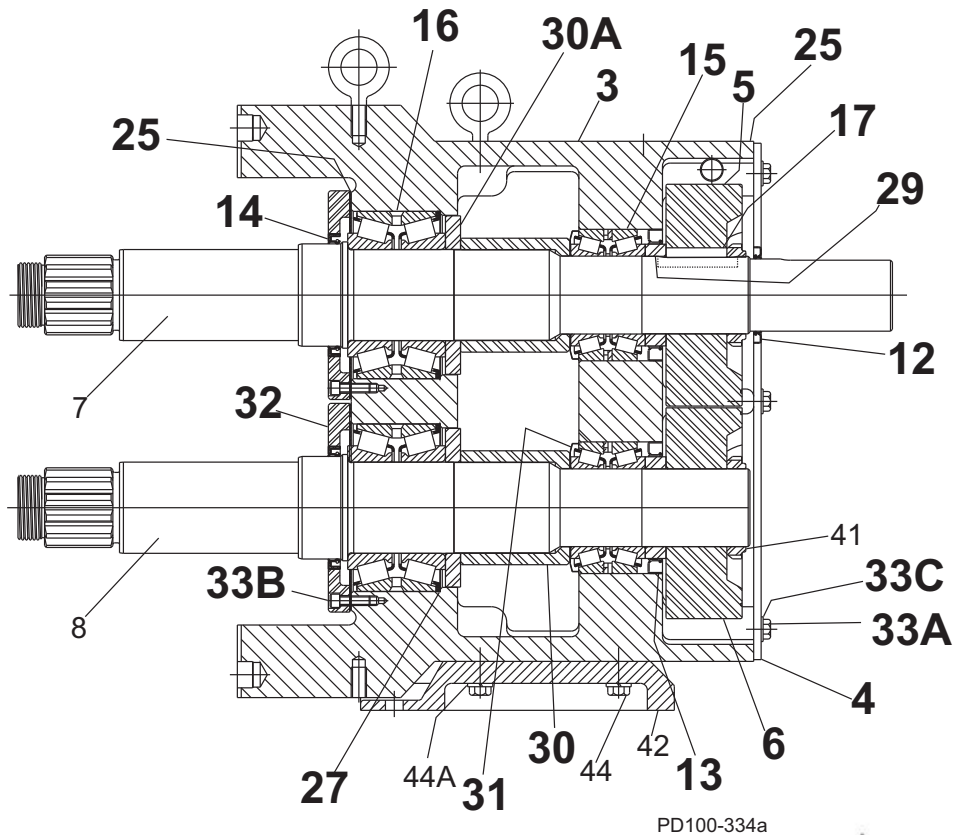
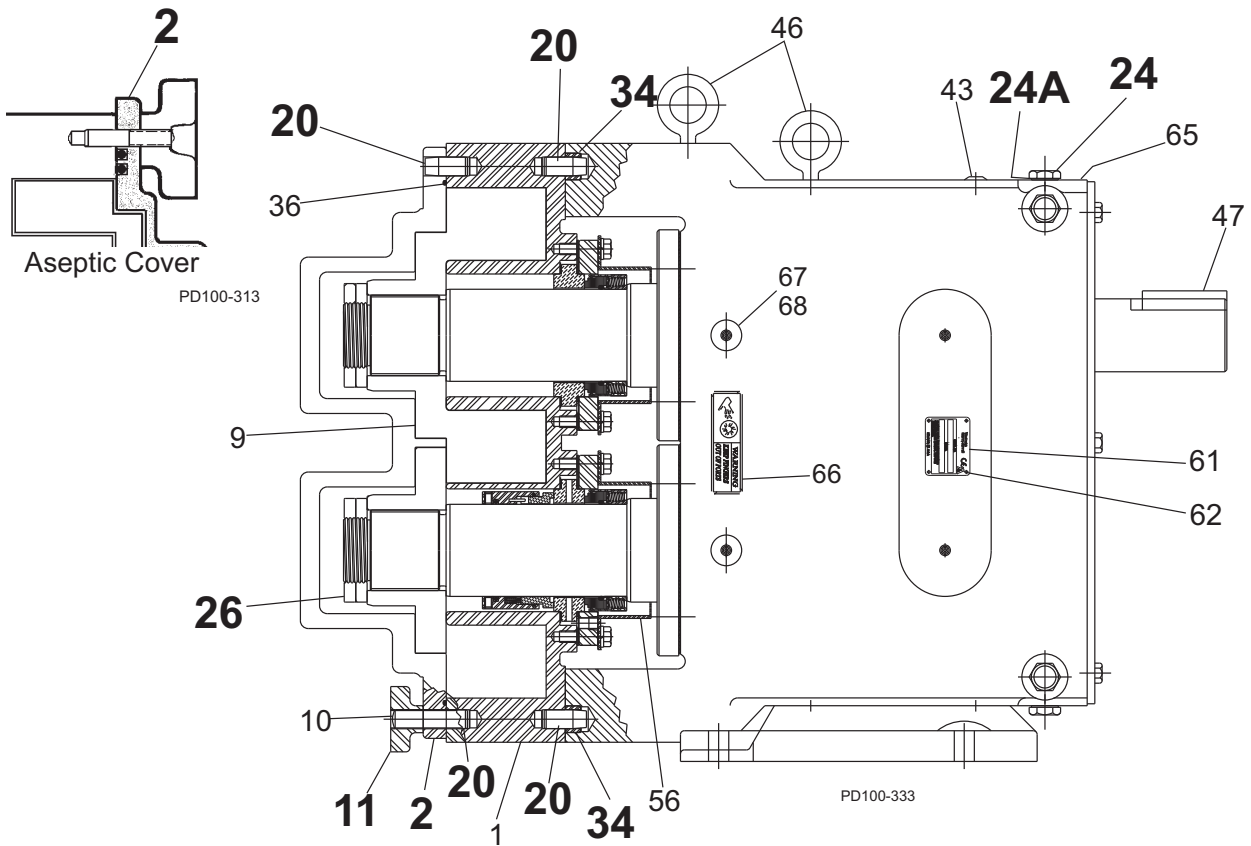
Kits to replace obsolete shafts (prior to 7/30/01)

Item no.	Description	Qty	Kit part number:			
			113611+	113612+	113613+	113614+
Kit contains:						
5,6	Gears	1	102470+	102470+	102470+	102470+
7	Drive Shaft, Std.	1	113518+	--	--	--
	Drive Shaft, HD	1	--	--	113520+	--
8	Short Shaft, Std.	1	--	113519+	--	--
	Short Shaft, HD	1	--	--	--	113521+
13	Oil Seal, Gear Case Rear	1	STD119000	STD119000	STD119000	STD119000
15	Bearing, Rear	1	0H1036000	0H1036000	0H1036000	0H1036000
16	Bearing, Front	1	0H1036003	0H1036003	0H1036003	0H1036003
17	Key, Gear	1	0H1037000	0H1037000	0H1037000	0H1037000
29	Spacer, Gear to Rear Bearing	1	117691+	117691+	117691+	117691+
30	Spacer, Front Bearing	1	102473+	102473+	102473+	102473+
30A	Spacer, Bearing	1	102472+	102472+	102472+	102472+
31	Grease Retainer	1	STD091000	STD091000	STD091000	STD091000
41	Locknut, Gear	1	105697+	105697+	105697+	105697+

Notes:

- Contact Customer Service with serial number of pump for part number.
- Standard clearance and finish part number shown. Contact Customer Service for optional clearances and finishes.
- Pumps shipped starting July 30, 2001.
- 5A. Kits replace obsolete shafts 0H1008002, 33081, 0H1009002, and 33204 used in obsolete gear case 0H1005000, which was supplied for pumps shipped prior to July 30, 2001. These kits allow the use of the new style shaft assemblies in old style gearcases. Old style gearcases have a step in the rear bearing bore.
43. Tru-Fit drive shaft is longer than the standard drive shaft listed here. See page 110.
46. SPX FLOW now offers shafts with pressed-on bearings. See page 113.
For pumps older than 7/30/01, in addition to the available shaft and bearing assemblies listed on page 113, you will need items 5/6 (102470+) and 13 (STD119000), listed above. All of these parts are available, unassembled, using the kit part numbers listed above.

320, 323, 324-U1 Common Parts



320, 323, 324-U1 Common Parts

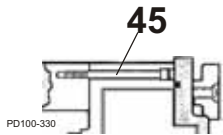
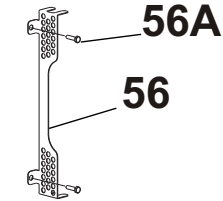
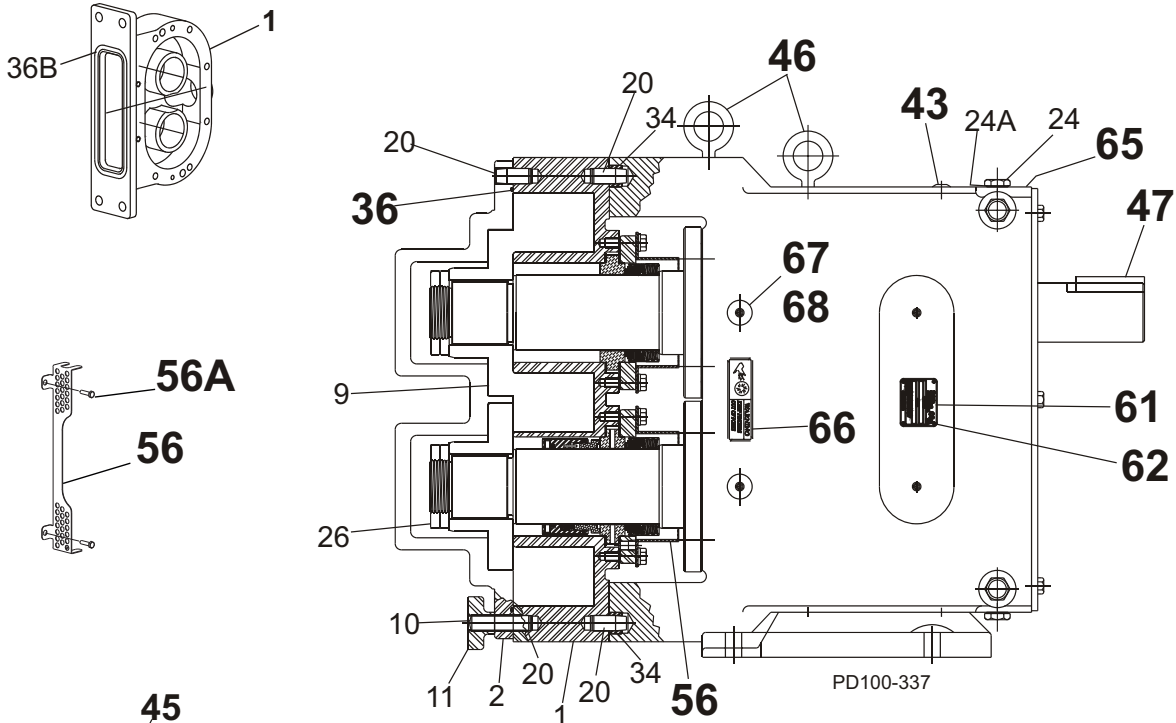
ITEM NO.	DESCRIPTION	QTY. PER PUMP	PART NO.	NOTES
2	320, 324-U1 Pump Cover	1	0H1002002	
	323-U1 Pump Cover	1	323002020+	
3	320, 323-U1 Gear Case Assembly, CI	1	320108000-C	5
	324-U1 Gear Case Assembly, CI	1	324108000-C	5
4	Gear Case Cover, Steel	1	40669+	
5	Gear, Drive Shaft, Spur	1	102470+	6
6	Gear, Short Shaft, Spur	1	102470+	6
11	Wing Nut	8	110858+	
	Hex Nut, optional	8	108373+	
12	Oil Seal, Gear Case Cover	1	STD030004	
13	Oil Seal, Gear Case Rear	2	102475+	4
14	Grease Seal, Bearing Retainer	2	121681+	7
15	Bearing, Rear	2	0H1036000	
16	Bearing, Front	2	0H1036003	
17	Key, Gear	2	0H1037000	
20	Dowel Pins	4	0H1040000	43
24	Oil Plug, M20 x 1.5"	5	115798+	40
	Oil Level Indicator, M20 x 1.5"	1	115799+	
25	Silicone Sealant	1	000142301+	
26	Jam Nut, Rotor	4	0H1052003	
27	Shim Kit	2	117893+	
29	Spacer, Gear to Rear Bearing	2	102474+	
	Spacer, Gear to Rear Bearing	2	117691+	3
30	Spacer, Bearing	2	102472+	4
30A	Spacer, Front Bearing	2	102473+	
31	Grease Retainer, Rear Bearing	2	STD091000	
32	Bearing Retainer, Front	2	0H1080000	7
33A	3/8-16 x .75" HHCS, Gear Case cover	6	30-314	
33B	5/16-18 x 1" SHCS, Bearing Retainer	8	30-343	
33C	3/8" Washer, Plain	6	43-189	
34	Dowel Bushings	2	0H1116000	

PL5060-CH60

Notes:

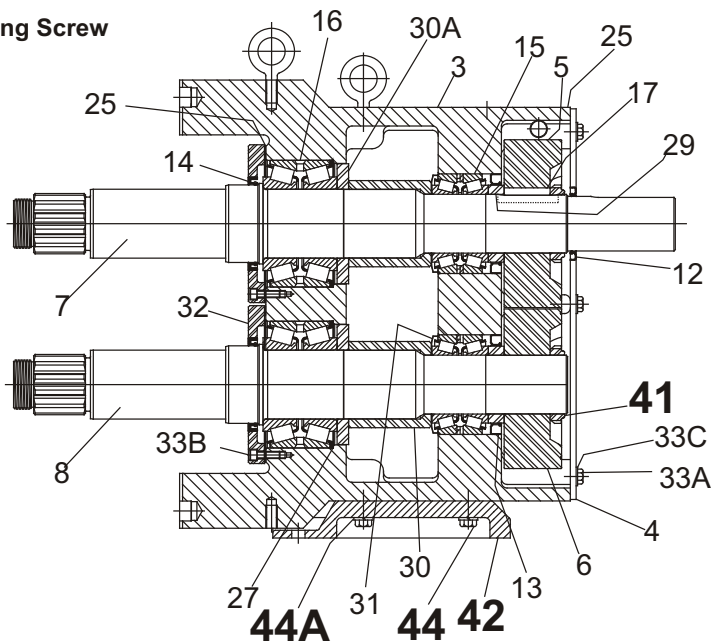
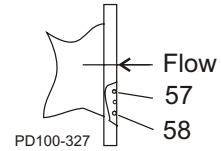
4. For pumps shipped starting July 30, 2001. Pumps shipped prior to 7/30/01 used part # STD119000, qty. 2. Verify date of manufacture to identify correct part needed.
5. For pumps shipped prior to 5/15/03: consult Customer Service and provide serial # for upgrade of gear case subassembly.
6. There was a change to the spur gears approx. 1999. The new gears and the old gears will not mesh: replace both drive shaft spur and short shaft spur gears together.
7. For bearing isolator kit, and for bearings/grease seals for older pumps, see page 111.
40. For pumps shipped after 5/15/03. Pumps shipped prior to 5/15/03 used plug w/washer, p/n 000046004+, qty 6. Verify date of manufacture to identify correct part needed.
43. Exposed length of dowel pin: .75" (19 mm)

320, 323, 324-U1 Common Parts, cont'd



Body Retaining Screw

Aseptic Flange



Gear Case and Shaft
 For Pumps Shipped
 Prior to July 30, 2001

PD100-336b

7 or 8

PD100-335

320, 323, 324-U1 Common Parts, cont'd

ITEM NO.	DESCRIPTION	QTY. PER PUMP	PART NO.	NOTES
*	O-Ring, Pump Cover, Buna N	1	N70280	
	O-Ring, Pump Cover, EPDM	1	E70280	
	O-Ring, Pump Cover, FKM	1	V70280	
	O-Ring, Pump Cover, Silicone	1	323117013+	
	323-U1 O-Ring Cord, EPDM	1	323117012+	11
	323-U1 O-Ring Cord, FKM	1	323117014+	11
	323-U1 O-Ring Cord, Silicone	1	323117013+	11
*	323-U1 O-Ring, Pump Cover, Inner, EPDM	1	323117002+	11
	323-U1 O-Ring, Pump Cover, Inner, FKM	1	323117004+	11
	323-U1 O-Ring, Pump Cover, Inner, Silicone	1	323117003+	11
36B	324-U1 O-Ring, Rectangular Flange	1	N70382	
41	Locknut, Gear	2	105697+	
42	Gear Case Shim, CI	1	40288+	
	Pump Pedestal, 22"	1	324110226+	
43	Plastic Cap Plug	6	000121001+	
44	1/2-13 x 1.75" SHCS	4	30-250	
44A	Lockwasher, 1/2"	4	43-177	
45	Body Retaining, 3/8-16 x 4" SHCS	2	30-323	
46	1/2-13 Eye Bolt	3	30-360	
47	Key, Coupling - 5/8 x 5/8 x 2"	1	000037005+	
48	Cleanout Plug	2	41013+	15
56	Guard, Seal	2	113505+	
56A	HHCS 5/16-18 x .50" 18-8	4	30-163	
*	O-Ring, Port, Inner, EPDM	2	E70261	11
	O-Ring, Port, Inner, FKM	2	V70261	11
	O-Ring, Port, Inner, Silicone	2	S75261	11
*	O-Ring, Port, Outer, EPDM	2	E70265	11
	O-Ring, Port, Outer, FKM	2	V70265	11
	O-Ring, Port, Outer, Silicone	2	S75265	11
61	Name Plate	1	001061015+	
62	#2 x .125" RHDS	4	30-355	
65	Caution Plate	2	33-62	
66	Warning Label	2	33-60	16
67	320-323-U1 Grease Fitting, 1/8"	4	BD0092000	
	324-U1 Grease Fitting, 1/8"	4	BD0092100	
68	Plastic Cap, Grease Fitting	4	BD0093000	
	Decal Kit	1	137493+	16

Gear Case and shaft for pumps shipped prior to July 30, 2001:

50	Grease Retainer, Gear Case, Front Bearing	2	STD030003	3
52	Spacer, Rear Bearing	2	OH1055002	3
53	Locknut, Front Bearing	2	OH1236001	3
54	Lockwasher, Front Bearing	2	OH1136001	3
55	Spacer, Front Bearing	2	OH1055001	3

PL5060-CH61

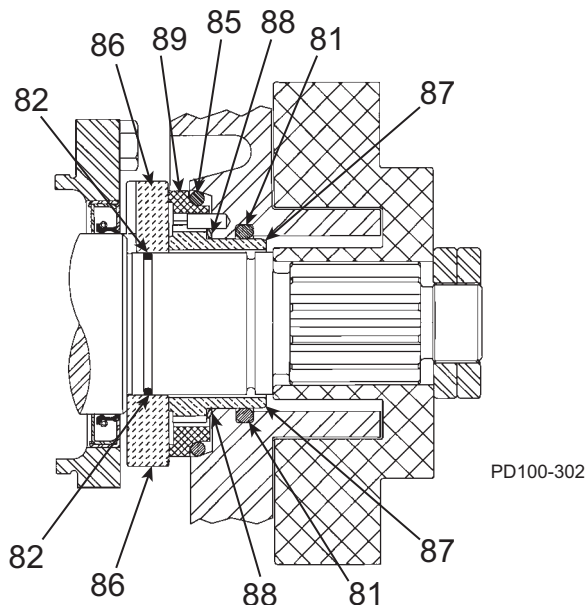
Notes:

*** Recommended Spare Parts**

3. Pumps shipped prior to July 30, 2001
11. Used on 323-U1 only.
15. For an older gearcase without a threaded plug hole, use plug p/n BD0121100.
16. Decal kit contains 2 x 121694+ (Caution, Read Manual label); 2 x 33-63 (Small warning label (models 006-040)); 2 x 33-60 (Large warning label (models 060-320)); 1 x 7403951 (SPX name label); 1 x 125115+ (Patent label).

Mechanical Seals, Model 006, 014, 015, 018, 024, 030, 034, 040, 060, 064, 130, 134, 220, 224-U1

Double Mechanical Seal Components



PD100-302

Single Mechanical Seal Components

Item No.	Description		Part No. by Model				Qty. Per Pump	
			006-014-015-018-024-U1	030-034-040-U1	060, 064, 130, 134-U1	220, 224-U1	Mechanical Seal	
							Single	Double
* 81	O-Ring, Body	Buna N	AD0079000	N70327	N70331	N70338	2	2
		EPDM	AD0079002	E70327	E70331	E70338		
		FKM	AD0079V00	V70327	V70331	V70338		
		Silicone	AD0079SC0	S75327	S75331	S75338		
* 82	O-Ring, Shaft	Buna N	N70022	N70028	N70131	N70144	2	2
		EPDM	E70022	E70028	E70131	E70144		
		FKM	V70022	V70028	V70131	V70144		
		Silicone	S75022	S75028	S75131	S75144		
* 85	O-Ring, Outer, Seal Carrier	Buna N	N50228	N50335	N50338	N50344	N/A	2
		EPDM	E50228	E50335	E50338	E50344	N/A	2
		FKM	N/A	V50335	V50338	V50344	N/A	2
		Silicone	N/A	S50335	n/a	S50344	N/A	2
* 86	Seal Seat	Ceramic	015014002+	030014002+	060014002+	220014002+	2	2
		Chrome Oxide	015014001+	030014001+	060014001+	220014001+	2	2
		Silicon Carbide	015014009+	030014009+	060014009+	220014009+	2	2
* 87	Seal Inner	Carbon (2 piece)	015306001+	030306001+	060306001+	220306001+	N/A	2
		Carbon (1 piece)	015306007+	030306007+	060306007+	220306007+	2	2
		Ceramic	40635+	40821+	40642+	40830+	2	2
		Chrome Oxide	015306002+	030306002+	060306002+	220306002+	2	2
		Silicon Carbide	015306009+	030306009+	060306009+	220306009+	2	2
* 88	Wave Spring	015304000+	030304000+	060304000+	220304000+	2	2	
* 89	Outer Seal	Carbon (1 piece)	015206007+	030206007+	060206007+	220206007+	N/A	2
		Chrome Oxide	N/A	030206002+	060206002+	220206002+	N/A	2

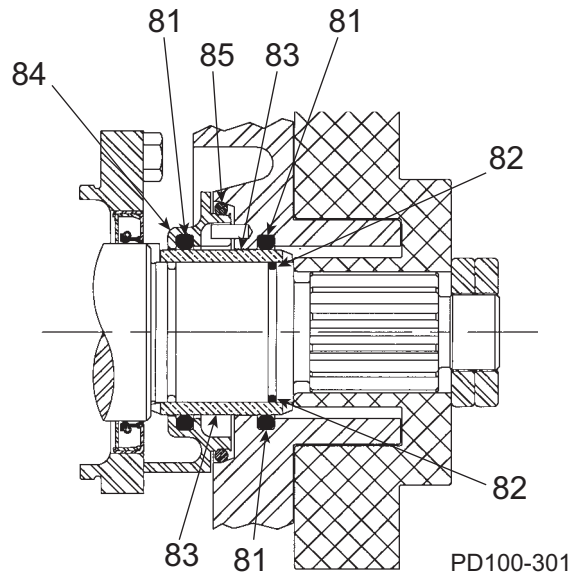
PL5060-CH34c

Notes:

* Recommended Spare Parts

O-Ring Seals, Model 006, 014, 015, 018, 024, 030, 034, 040, 060, 064, 130, 134, 220, 224-U1

Double O-Ring Seal Components



Single O-Ring Seal Components

Item No.	Description	Part No. by Model				Qty. Per Pump		Notes	
		006-014-015-018-024-U1	030-034-040-U1	060, 064, 130, 134-U1	220, 224-U1	O-Ring Seal			
						Single	Double		
* 81	O-Ring, Body	Buna N	AD0079000	N70327	N70331	N70338	2	4	
		EPDM	AD0079002	E70327	E70331	E70338			
		FKM	AD0079V00	V70327	V70331	V70338			
		Silicone	AD0079SC0	S75327	S75331	S75338			
* 82	O-Ring, Shaft	Buna N	N70022	N70028	N70131	N70144	2	2	
		EPDM	E70022	E70028	E70131	E70144			
		FKM	V70022	V70028	V70131	V70144			
		Silicone	S75022	S75028	S75131	S75144			
* 83	Sleeve	SS	015098000+	030098000+	060098000+	220098000+	2	2	
		Zirconia	015098004+	030098004+	060098004+	220098004+	2	2	
		Chrome Oxide	015098002+	030098002+	060098002+	220098002+	2	2	
84	Carrier, O-Ring Seal	015034001+	030034001+	060034001+	220034001+	N/A	2	9	
* 85	O-Ring, Outer, Seal Carrier	Buna N	N50228	N50335	N50338	N50344	N/A	2	
		EPDM	E50228	E50335	E50338	E50344	N/A	2	
		FKM	N/A	V50335	V50338	V50344	N/A	2	
		Silicone	N/A	S50335	n/a	S50344	N/A	2	

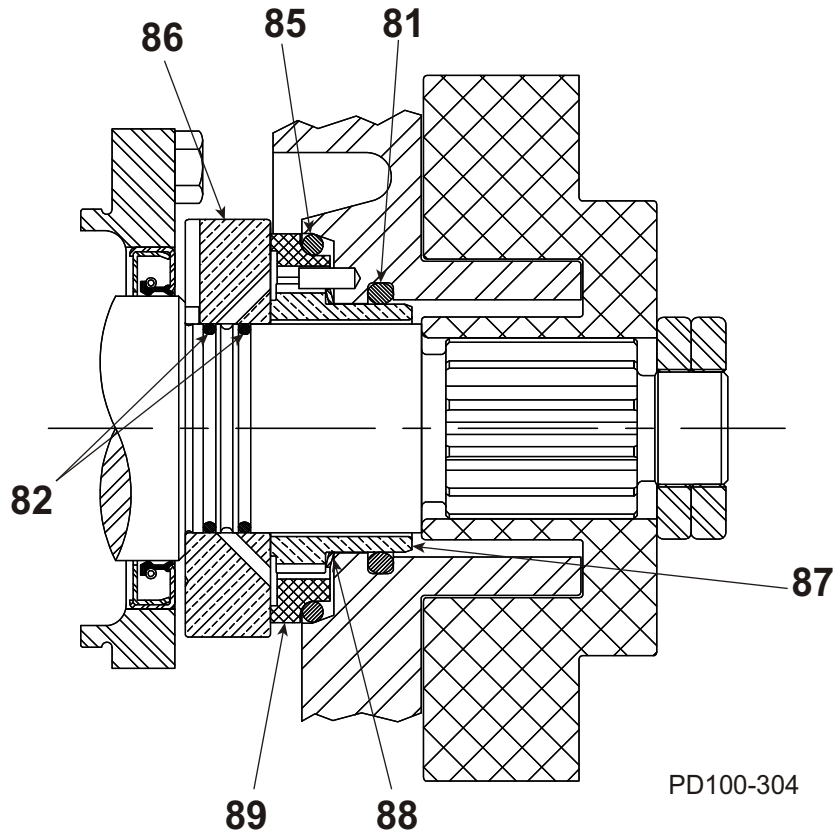
PL5060-CH34d

Notes:

*** Recommended Spare Parts**

- For pumps manufactured prior to July 2004, use 0150304000+ for 006 through 024-U1; 030034000+ for 030 through 040-U1, 060034000+ for 060 through 134-U1 and 220034000+ for 220 through 224 -U1.

Aseptic Seals, Waukesha Design, Model 033, 133, 223-U1

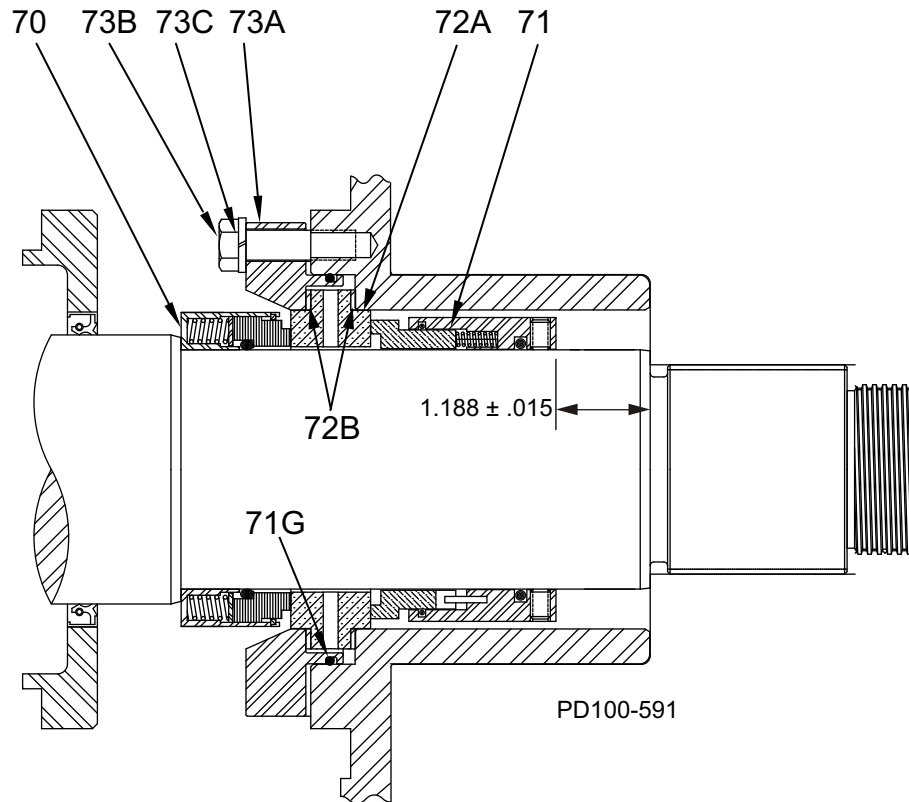


Item No.	Description		033-U1	133-U1	223-U1	Qty. Per Pump
* 81	O-Ring, Body	Buna N	N70327	N70331	N70338	2
		EPDM	E70327	E70331	E70338	
		FKM	V70327	V70331	V70338	
		Silicone	S75327	S75331	S75338	
* 82	O-Ring, Shaft	Buna N	N70028	N70131	N70144	4
		EPDM	E70028	E70131	E70144	
		FKM	V70028	V70131	V70144	
		Silicone	S75028	S75131	S75144	
* 85	O-Ring, Outer, Seal Carrier	Buna N	N50335	N50338	N50344	2
		EPDM	E50335	E50338	E50344	
		FKM	V50335	V50338	V50344	
		Silicone	S50335	S50338	S50344	
* 86	Seal Seat	Ceramic	033014002+	133014002+	223014002+	2
		Chrome Oxide	033014001+	133014001+	223014001+	2
		Silicon Carbide	033014009+	133014009+	223014009+	2
* 87	Seal, Inner	Carbon (2 piece)	030306001+	060306001+	220306001+	2
		Carbon (1 piece)	030306007+	060306007+	220306007+	2
		Ceramic	40821+	40642+	40830+	2
		Chrome Oxide	030306002+	060306002+	220306002+	2
		Silicon Carbide	030306009+	060306009+	220306009+	2
88	Wave Spring		030304000+	060304000+	220304000+	2
* 89	Outer Seal	Carbon (1 piece)	030206007+	060206007+	220206007+	2
		Chrome Oxide	030206002+	060206002+	220206002+	2

PI 5060-CH34b

* Recommended Spare Parts

PD Pump Seals Model 320, 323, 324-U1 (April 2015 and newer)



ITEM NO.	DESCRIPTION	QTY. PER PUMP	PART NO.	NOTES
* 70	Outer Seal, Carbon	2	300114002+	
* 71	Waukesha HD Inner Seal, Silicon Carbide	2	40572+	
* 71G	Gland O-Ring, EPDM	2	E70157	
	Gland O-Ring, FKM	2	V70157	
	Gland O-Ring, Silicone	2	S75157	
* 72A	"T" Seat, Flushed, Silicon Carbide	2	300014031+	
* 72B	Gaskets, Gylon 3510	4	109181+	
	Gaskets, FKM	4	129753+	
	Gaskets, EPDM Diaphragm Sheet	4	129754+	
	Gaskets, EPDM	4	129755+	
	Gaskets, Garlock 681	4	129756+	
	Gaskets, Silicone Rubber	4	129757+	
73A	Gland, Flushed	2	128418+	
73B	3/8-16 x 1-1/4" HHCS	8	30-60	
73C	Lockwasher, 3/8"	8	43-28	

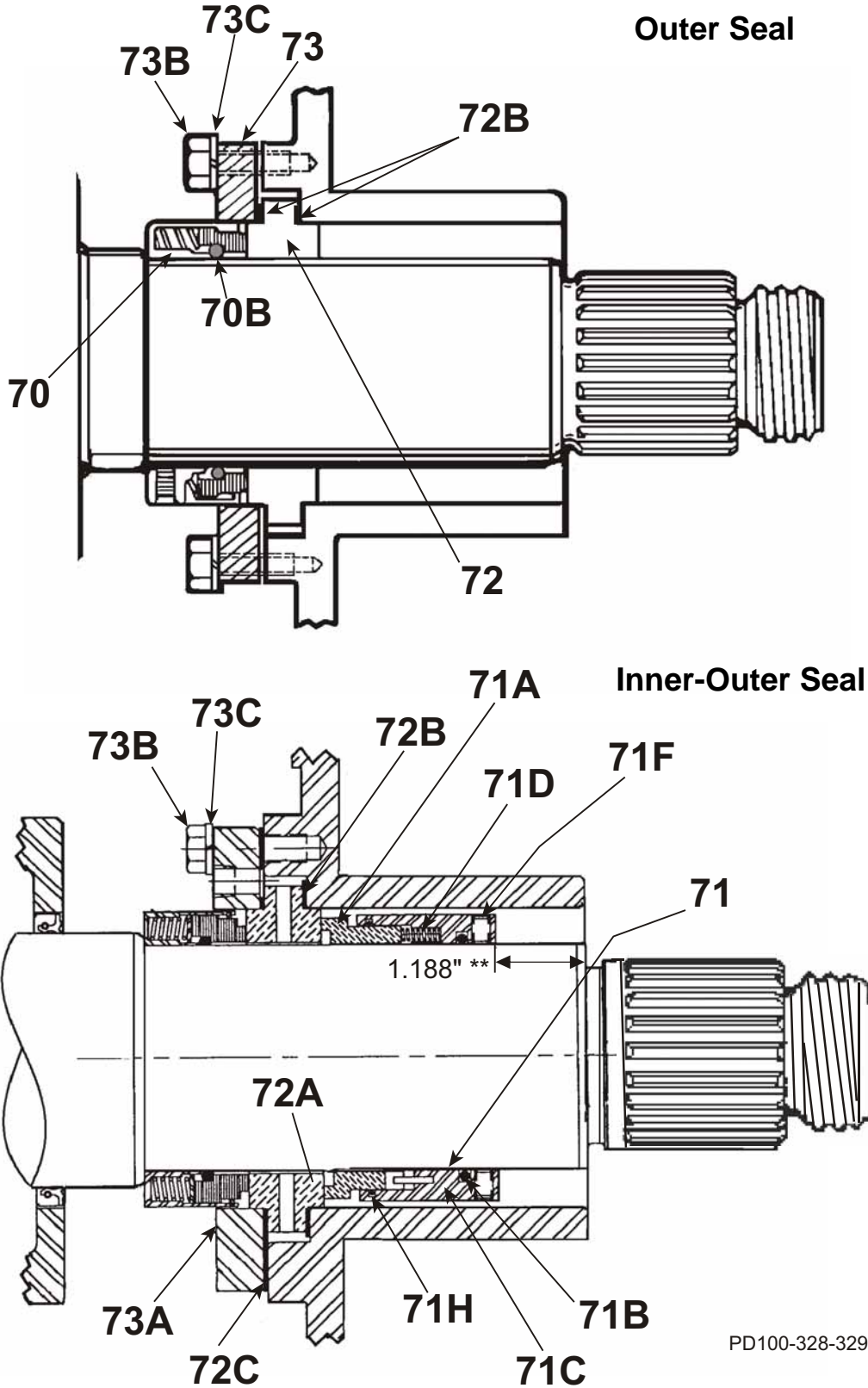
PL5060-CH125

Notes:

*** Recommended Spare Parts**

33. Seal design changed April 2015; this design applies to pumps sold since April 2015. Check serial number for date of manufacture.

PD Pump Seals Model 320, 323, 324-U1 (Pre-April 2015)



PD100-328-329

** Waukesha HD/Crane 8B2 shown. Contact Customer Service and provide serial # to correctly identify the pump seal provided.

PD Pump Seals Model 320, 323, 324-U1 (Pre-April 2015)

Outer Seal

Item No.	Description	Qty. per Pump	Part No.	Notes
* 70	Crane #8B2 Outer Seal, Carbon	2	300114002+	30
* 70B	O-Ring, Outer Seal, Shaft, EPDM	2	E70234	
	O-Ring, Outer Seal, Shaft, FKM		V70234	
	O-Ring, Outer Seal, Shaft, Silicone		S75234	
* 72	"T" Seat, Plain, Ceramic	2	300014012+	
	"T" Seat, Plain, Tungsten Carbide	2	300014013+	
	"T" Seat, Plain, Silicon Carbide	2	300014016+	
* 72B	Gasket, Inner and Outer, FKM	4	300042001+	
	Gasket, Inner and Outer, Gylon	4	105237+	31
73	Gland, Flushing	2	300034001+	32
73B	3/8-16 x 1-1/4" HHCS	8	30-60	
73C	Lockwasher, 3/8"	8	43-28	

Inner-Outer Seal

Item No.	Description	Qty. per Pump	Part No.	Notes
* 70	Crane #8B2 Outer Seal, Carbon w/Silicone O-ring	2	323114003+	30
* 71	Waukesha HD Inner Seal, Silicon Carbide	2	40572+	16
	Waukesha HD Inner Seal, Ceramic	2	40573+	16
	Waukesha HD Inner Seal, Chrome Oxide	2	40574+	16
* 71A	Seal Face, Silicon Carbide	2	40754+	
	Seal Face, Ceramic	2	40755+	
	Seal Face, Chrome Oxide	2	40756+	
	Seal Face, Tungsten Carbide	2	109347+	
	Seal Face, Carbon	2	36027+	
* 71B	O-Ring, Inner Seal, Shaft, EPDM	2	E70234	
	O-Ring, Inner Seal, Shaft, FKM		V70234	
	O-Ring, Inner Seal, Shaft, Silicone		S75234	
71C	Carrier Inner Sub-Assembly	2	35284+	
* 71D	Spring	12	40875+	
* 71F	Set Screw	8	110038+	
* 71H	O-Ring, Inner Seal, Seal Face, EPDM	2	E70238	
	O-Ring, Inner Seal, Seal Face, FKM		V70238	
	O-Ring, Inner Seal, Seal Face, Silicone		S75238	
* 72A	"T" Seat, Flushed, Ceramic	2	300014027+	
	"T" Seat, Flushed, Tungsten Carbide	2	300014028+	
	"T" Seat, Flushed, Chrome Oxide	2	300014029+	
	"T" Seat, Flushed, Silicon Carbide	2	300014031+	
* 72B	Gasket, Inner, FKM	2	300042001+	
	Gasket, Inner, Gylon	4	105237+	31
* 72C	Gasket, Flushed Gland, Outer	2	300042002+	
73A	Gland, Flushing	2	300034001+	32
73B	3/8-16 x 1-1/4" HHCS	8	30-60	
73C	3/8" Lockwasher	8	43-28	

PL5060-CH62

Notes:

* Recommended Spare Parts

16. Complete inner seal supplied with FKM O-rings. Buna, EPDM, Silicon rubber O-rings also available—contact Customer Service for information.
30. Alternate materials available. Standard is listed. Contact Customer Service for information.
31. Used with Buna, Silicon, and EPDM elastomers.
32. Seal design changed April 2015; this applies to pumps sold before April 2015. Check serial number for date of manufacture. This gland has two flush holes that can be plugged; for non-flush, order 300034001+ plus two plugs, part # STD128500.

PD Pump Seal Kits - 006, 015, 018-U1

U1 Pump Model Size	Shaft Seal Type	O-ring/Sleeve or Seal Material	Kit Type	Kit Part Number
006, 015, 018-U1	Single O-ring	BUNA	O-ring	105255+
		BUNA/SS	O-ring/Sleeve	105247+
		BUNA/ZI	O-ring/Sleeve	105248+
		FKM	O-ring	105256+
		FKM/SS	O-ring/Sleeve	105251+
		FKM/ZI	O-ring/Sleeve	105252+
	Double O-ring	BUNA	O-ring	105257+
		BUNA/SS	O-ring/Sleeve	105249+
		BUNA/ZI	O-ring/Sleeve	105250+
		FKM	O-ring	105258+
		FKM/SS	O-ring/Sleeve	105253+
		FKM/ZI	O-ring/Sleeve	105254+
	Single Mechanical	BUNA	O-ring	105255+
		BUNA/C/CE	O-ring/Seal/Spring	105295+
		BUNA/C/SC	O-ring/Seal/Spring	105297+
		BUNA/CO/CO	O-ring/Seal/Spring	133379+
		BUNA/SC/SC	O-ring/Seal/Spring	133262+
		EPDM/SC/SC	O-ring/Seal/Spring	129349+
		FKM	O-ring	105256+
		FKM/C/CE	O-ring/Seal/Spring	105296+
		FKM/C/SC	O-ring/Seal/Spring	105298+
		FKM/SC/SC	O-ring/Seal/Spring	133263+
	Double Mechanical	BUNA	O-ring	105303+
		BUNA/C/CE-C/CE	O-ring/Seal/Spring	105299+
		BUNA/SC/SC-C/SC	O-ring/Seal/Spring	105301+
		EPDM/C/CE/C	O-ring/Seal/Spring	133805+
		EPDM/SC/SC-C/SC	O-ring/Sleeve	133878+
		FKM	O-ring	105304+
		FKM/C/CE-C/CE	O-ring/Seal/Spring	105300+
		FKM/CO/CO/CE	O-ring/Seal/Spring	138630+
	FKM/SC/SC-C/SC	O-ring/Seal/Spring	105302+	

PL5060-CH63

Key

- SM Single Mechanical
- DM Double Mechanical
- C Carbon
- CE Ceramic
- CO Chrome Oxide
- SC Silicon Carbide
- TC Tungsten Carbide
- NF Narrow Face
- ZI Zirconia

PD Pump Seal Kits - 014, 024-U1

U1 Pump Model Size	Shaft Seal Type	O-ring/Sleeve or Seal Material	Kit Type	Kit Part Number
014-U1	Single Mechanical	BUNA/C/CE	Seal kit	131425+
		BUNA/C/SC	Seal kit	133224+
		BUNA/CO/CO	Seal kit	133381+
		BUNA/SC/SC	Seal kit	133264+
		EPDM/C/CE	Seal kit	133189+
		EPDM/C/SC	Seal kit	133229+
		EPDM/CO/CO	Seal kit	133383+
		EPDM/SC/SC	Seal kit	133266+
		FKM/C/CE	Seal kit	133155+
		FKM/C/SC	Seal kit	133226+
		FKM/CO/CO	Seal kit	133382+
	FKM/SC/SC	Seal kit	133265+	
	Double Mechanical	BUNA/C/CE/C	Seal kit	133559+
		BUNA/SC/SC-C/SC	Seal kit	133879+
EPDM/C/CE/C		Seal kit	133801+	
EPDM/SC/SC-C/SC		Seal kit	133881+	
FKM/C/CE/C		Seal kit	133800+	
FKM/SC/SC-C/SC	Seal kit	133880+		
024-U1	Single Mechanical	BUNA/C/CE	Seal kit	131426+
		BUNA/C/SC	Seal kit	133225+
		BUNA/CO/CO	Seal kit	133384+
		BUNA/SC/SC	Seal kit	133267+
		FKM/C/CE	Seal kit	133156+
		FKM/C/SC	Seal kit	133227+
		FKM/CO/CO	Seal kit	133385+
	FKM/SC/SC	Seal kit	133268+	
	Double Mechanical	BUNA/C/CE/C	Seal kit	133802+
		BUNA/SC/SC-C/SC	Seal kit	133882+
		EPDM/C/CE/C	Seal kit	133804+
		EPDM/SC/SC-C/SC	Seal kit	133884+
		FKM/C/CE/C	Seal kit	133803+
		FKM/SC/SC-C/SC	Seal kit	133883+
EPDM/C/CE		Seal kit	133190+	
EPDM/C/SC	Seal kit	133230+		
EPDM/CO/CO	Seal kit	133386+		
EPDM/SC/SC	Seal kit	133269+		

PL5060-CH63a

Key

- SM Single Mechanical
- DM Double Mechanical
- C Carbon
- CE Ceramic
- CO Chrome Oxide
- SC Silicon Carbide
- TC Tungsten Carbide
- NF Narrow Face
- ZI Zirconia

PD Pump Seal Kits - 030, 034, 040-U1

U1 Pump Model Size	Shaft Seal Type	O-ring/Sleeve or Seal Material	Kit Type	Kit Part Number
030, 040-U1	Single O-ring	BUNA	O-ring	105267+
		BUNA/SS	O-ring/Sleeve	105259+
		BUNA/ZIR	O-ring/Sleeve	105260+
		FKM	O-ring	105268+
		FKM/SS	O-ring/Sleeve	105263+
		FKM/ZIR	O-ring/Sleeve	105264+
	Double O-ring	BUNA	O-ring	105269+
		BUNA/SS	O-ring/Sleeve	105261+
		BUNA/ZIR	O-ring/Sleeve	105262+
		FKM	O-ring	105270+
		FKM/SS	O-ring/Sleeve	105265+
		FKM/ZIR	O-ring/Sleeve	105266+
	Single Mechanical	BUNA	O-ring	105267+
		BUNA/C/CE	O-ring/Seal/Spring	105305+
		BUNA/C/SC	O-ring/Seal/Spring	105307+
		BUNA/CO/CO	O-ring/Seal/Spring	133387+
		BUNA/SC/SC	O-ring/Seal/Spring	133270+
		EPDM/CO/CO	O-ring/Seal/Spring	133388+
		EPDM/C/CE	O-ring/Seal/Spring	129350+
		EPDM/SC/SC	O-ring/Seal/Spring	129348+
		FKM	O-ring	105268+
		FKM/C/CE	O-ring/Seal/Spring	105306+
		FKM/C/SC	O-ring/Seal/Spring	105308+
		FKM/SC/SC	O-ring/Seal/Spring	129347+
	Double Mechanical	BUNA	O-ring	105313+
		BUNA/C/CE-C/CE	O-ring/Seal/Spring	105309+
		BUNA/SC/SC-C/SC	O-ring/Seal/Spring	105311+
		EPDM/SC/SC-C/SC	O-ring/Seal/Spring	133885+
		FKM	O-ring	105314+
		FKM/C/CE-C/CE	O-ring/Seal/Spring	105310+
		FKM/CO/CO/C	O-ring/Seal/Spring	138632+
		FKM/SC/SC-C/SC	O-ring/Seal/Spring	105312+
034-U1	Single Mechanical	BUNA/C/CE	Seal kit	131427+
		BUNA/C/SC	Seal kit	133233+
		BUNA/CO/CO	Seal kit	133485+
		BUNA/SC/SC	Seal kit	133340+
		EPDM/C/CE	Seal kit	133192+
		EPDM/CO/CO	Seal kit	133487+
		FKM/C/CE	Seal kit	133157+
		FKM/CO/CO	Seal kit	133486+
	Double Mechanical	BUNA/C/CE/C	Seal kit	133806+
		BUNA-SC/SC C/SC	Seal kit	133886+
		EPDM/C/CE/C	Seal kit	133808+
		EPDM-SC/SC C/SC	Seal kit	133888+
		FKM/C/CE/C	Seal kit	133807+
		FKM-SC/SC C/SC	Seal kit	133887+

PL5060-CH63b

PD Pump Seal Kits - 060, 130-U1

U1 Pump Model Size	Shaft Seal Type	O-ring/Sleeve or Seal Material	Kit Type	Kit Part Number
060, 130-U1	Single O-ring	BUNA	O-ring	105279+
		BUNA/SS	O-ring/Sleeve	105271+
		BUNA/ZI	O-ring/Sleeve	105272+
		FKM	O-ring	105280+
		FKM/SS	O-ring/Sleeve	105275+
		FKM/ZI	O-ring/Sleeve	105276+
	Double O-ring	BUNA	O-ring	105281+
		BUNA/SS	O-ring/Sleeve	105273+
		BUNA/ZI	O-ring/Sleeve	105274+
		FKM	O-ring	105282+
		FKM/SS	O-ring/Sleeve	105277+
		FKM/ZI	O-ring/Sleeve	105278+
	Single Mechanical	BUNA	O-ring	105279+
		BUNA/C/CE	O-ring/Seal/Spring	105315+
		BUNA/C/SC	O-ring/Seal/Spring	105317+
		BUNA/CO/CO	O-ring/Seal/Spring	133488+
		BUNA/SC/SC	O-ring/Seal/Spring	133343+
		EPDM/SC/SC	O-ring/Seal/Spring	133344+
		FKM	O-ring	105280+
		FKM/C/CE	O-ring/Seal/Spring	105316+
		FKM/C/SC	O-ring/Seal/Spring	105318+
		FKM/SC/SC	O-ring/Seal/Spring	129346+
	Double Mechanical	BUNA	O-ring	105323+
		BUNA/C/CE-C/CE	O-ring/Seal/Spring	105319+
		BUNA/SC/SC-C/SC	O-ring/Seal/Spring	105321+
		FKM	O-ring	105324+
		FKM/C/CE-C/CE	O-ring/Seal/Spring	105320+
		FKM/CO/CO/C	O-ring/Seal/Spring	138631+
		FKM/SC/SC-C/SC	O-ring/Seal/Spring	105322+

PL5060-CH64

Key

- SM Single Mechanical
- DM Double Mechanical
- C Carbon
- CE Ceramic
- CO Chrome Oxide
- SC Silicon Carbide
- TC Tungsten Carbide
- NF Narrow Face
- ZI Zirconia

PD Pump Seal Kits - 064, 134-U1

U1 Pump Model Size	Shaft Seal Type	O-ring/Sleeve or Seal Material	Kit Type	Kit Part Number
064-U1	Single Mechanical	BUNA/C/CE	Seal kit	131428+
		BUNA/C/SC	Seal kit	133237+
		BUNA/CO/CO	Seal kit	133490+
		BUNA/SC/SC	Seal kit	133345+
		EPDM/C/CE	Seal kit	133194+
		EPDM/C/SC	Seal kit	133239+
		EPDM/CO/CO	Seal kit	133492+
		EPDM/SC/SC	Seal kit	133347+
		FKM/C/SC	Seal kit	133238+
		FKM/CO/CO	Seal kit	133491+
	FKM/SC/SC	Seal kit	133346+	
	Double Mechanical	BUNA/C/CE/C	Seal kit	133810+
		BUNA/SC/SC-C/SC	Seal kit	133890+
		EPDM/C/CE/C	Seal kit	133812+
FKM/C/CE/C		Seal kit	133811+	
134-U1	Single Mechanical	BUNA/C/CE	Seal kit	131429+
		BUNA/C/SC	Seal kit	133240+
		BUNA/CO/CO	Seal kit	133493+
		BUNA/SC/SC	Seal kit	133348+
		EPDM/C/CE	Seal kit	133195+
		EPDM/C/SC	Seal kit	133242+
		EPDM/CO/CO	Seal kit	133495+
		EPDM/SC/SC	Seal kit	133350+
		FKM/C/SC	Seal kit	133241+
		FKM/CO/CO	Seal kit	133494+
	FKM/SC/SC	Seal kit	133349+	
	Double Mechanical	BUNA/C/CE/C	Seal kit	133813+
		BUNA/SC/SC-C/SC	Seal kit	133893+
		EPDM/C/CE/C	Seal kit	133815+
		FKM/C/CE/C	Seal kit	133814+

PL5060-CH64a

Key

- SM Single Mechanical
- DM Double Mechanical
- C Carbon
- CE Ceramic
- CO Chrome Oxide
- SC Silicon Carbide
- TC Tungsten Carbide
- NF Narrow Face
- ZI Zirconia

PD Pump Seal Kits - 220-U1

U1 Pump Model Size	Shaft Seal Type	O-ring/Sleeve or Seal Material	Kit Type	Kit Part Number
220-U1	Single O-ring	BUNA	O-ring	105291+
		BUNA/SS	O-ring/Sleeve	105283+
		BUNA/ZI	O-ring/Sleeve	105284+
		FKM	O-ring	105292+
		FKM/SS	O-ring/Sleeve	105287+
		FKM/ZI	O-ring/Sleeve	105288+
	Double O-ring	BUNA	O-ring	105293+
		BUNA/SS	O-ring/Sleeve	105285+
		BUNA/ZI	O-ring/Sleeve	105286+
		FKM	O-ring	105294+
		FKM/SS	O-ring/Sleeve	105289+
		FKM/ZI	O-ring/Sleeve	105290+
	Single Mechanical	BUNA	O-ring	105291+
		BUNA/C/CE	O-ring/Seal/Spring	105325+
		BUNA/C/SC	O-ring/Seal/Spring	105327+
		BUNA/SC/SC	O-ring/Seal/Spring	114949+
		BUNA/CO/CO	O-ring/Seal/Spring	121365+
		EPDM/SC/SC	O-ring/Seal/Spring	133353+
		FKM	O-ring	105292+
		FKM/C/CE	O-ring/Seal/Spring	105326+
		FKM/C/SC	O-ring/Seal/Spring	105328+
		FKM/SC/SC	O-ring/Seal/Spring	133352+
	Double Mechanical	BUNA	O-ring	105333+
		BUNA/C/CE/C/CE	O-ring/Seal/Spring	105329+
		BUNA/SC/SC/C/SC	O-ring/Seal/Spring	105331+
		EPDM/C/CE	O-ring/Seal/Spring	133191+
		EPDM/C/CE/C	O-ring/Seal/Spring	133816+
		FKM	O-ring	105334+
		FKM/C/CE/C/CE	O-ring/Seal/Spring	105330+
		FKM/SC/SC/C/SC	O-ring/Seal/Spring	105332+
224-U1	Single Mechanical	BUNA/C/CE	Seal Kit	133160+
		BUNA/SC/SC	Seal Kit	133354+
		EPDM/SC/SC	Seal Kit	133356+
		FKM/SC/SC	Seal Kit	133355+
	Double Mechanical	BUNA/C/CE/C	Seal Kit	133817+
		BUNA/SC/SC-C/SC	Seal Kit	133897+
		EPDM/C/CE/C	Seal Kit	133819+
		FKM/C/CE/C	Seal Kit	133818+

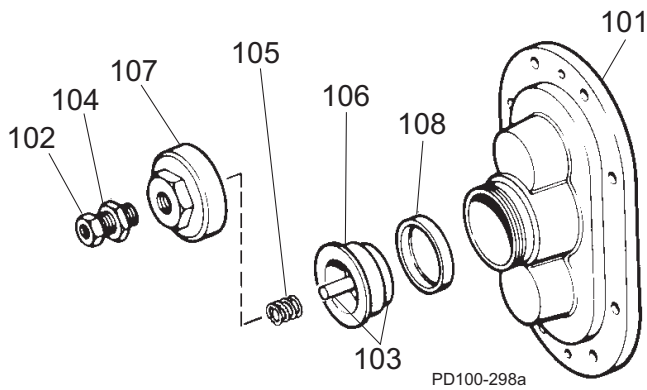
PL5060-CH64b

Key

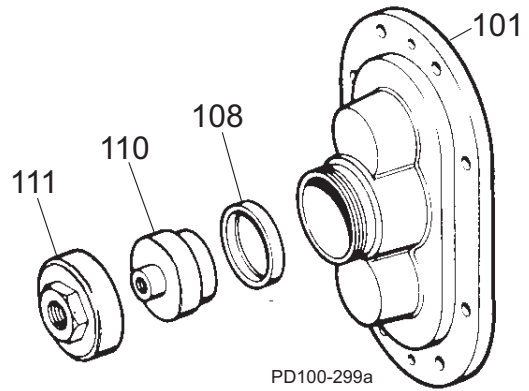
SM	Single Mechanical	SC	Silicon Carbide
DM	Double Mechanical	TC	Tungsten Carbide
C	Carbon	NF	Narrow Face
CE	Ceramic	ZI	Zirconia
CO	Chrome Oxide		

Universal 1 PD Pump Vented Covers

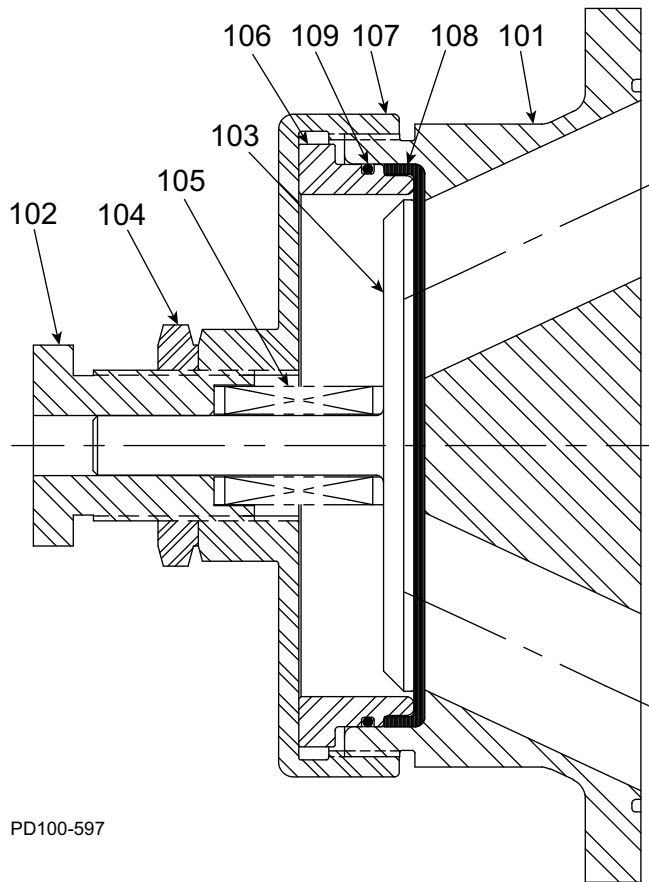
Manual Vented Cover, 006-134-U1



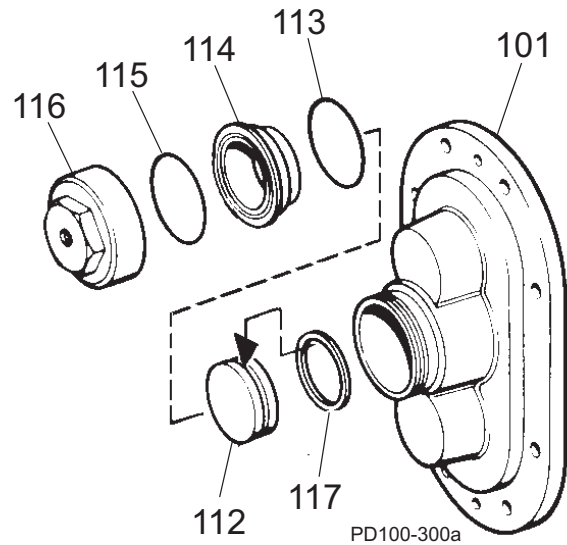
Pneumatic Diaphragm Vented Cover



Manual Vented Cover, 220-224 U1



Pneumatic Piston Vented Cover



Universal 1 PD Pump Vented Covers

ITEM NO.	DESCRIPTION	QTY. PER PUMP	PART NO.				NOTES
			006-014-015-018-024-U1	030-034-040-U1	060-064-130-134-U1	220-224-U1	
MANUAL VENTED COVER							
101	Vented Cover	1	AD0002VS0	BD0002VS0	CD0002VS0	GD0002VS0	
102	Adjusting Screw	1	AD0072000		113657+	GD0072100	1
103	Spring Plunger	1	AD0073000		113397+	GD0073000	2
104	Locknut	1	AD0074000		GD0074000		
105	Spring, Medium (< 150 psi)	1	AD0076000		113523+	113400+	3
	Spring, High (> 150 psi)		ABB076100		113400+	113524+	4
106	Diaphragm Bushing	1	AD0077000		CD0077000	GD0077000	
107	Cover Nut	1	AD0075000		113398+	GD0075000	5
* 108	Rubber Diaphragm, Buna N	1	AD0078000		CD0078000	GD0078000	
* 109	O-ring, Buna N	1	N/A		N/A	N70261	12
	O-ring, FKM					V70261	
	O-ring, Silicone					S75261	
PNEUMATIC DIAPHRAGM VENTED COVER							
101	Vented Cover	1	AD0002VS0	BD0002VS0	CD0002VS0	N/A	
* 108	Diaphragm, Buna N	1	AD0078000		CD0078000	N/A	
110	Diaphragm Bushing	1	AD0077P00		CD0077P00	N/A	
111	Cover Nut	1	AD0075P00		CD0075P00	N/A	
PNEUMATIC PISTON VENTED COVER							
101	Vented Cover	1	AD0002VS0	BD0002VS0	CD0002VS0	GD0002VS0	
112	Piston	1	AD0073P10		CD0073P10	GD0073P10	
* 113	O-Ring, Bushing Seal, Buna N	1	N70223		N70239	N70261	
114	Diaphragm Bushing	1	AD0077P10		CD0077P10	GD0077P10	
* 115	O-Ring, Nut Seal, Buna N	1	N70224		N70240	N70261	
116	Cover Nut	1	AD0075P10		CD0075P10	GD0075P10	
* 117	Piston Seal, Quad Ring	1	AD0133000		CD0133000	GD0133000	9
* 117	Piston Seal, O-Ring	1	N70218		N70236	N70258	9

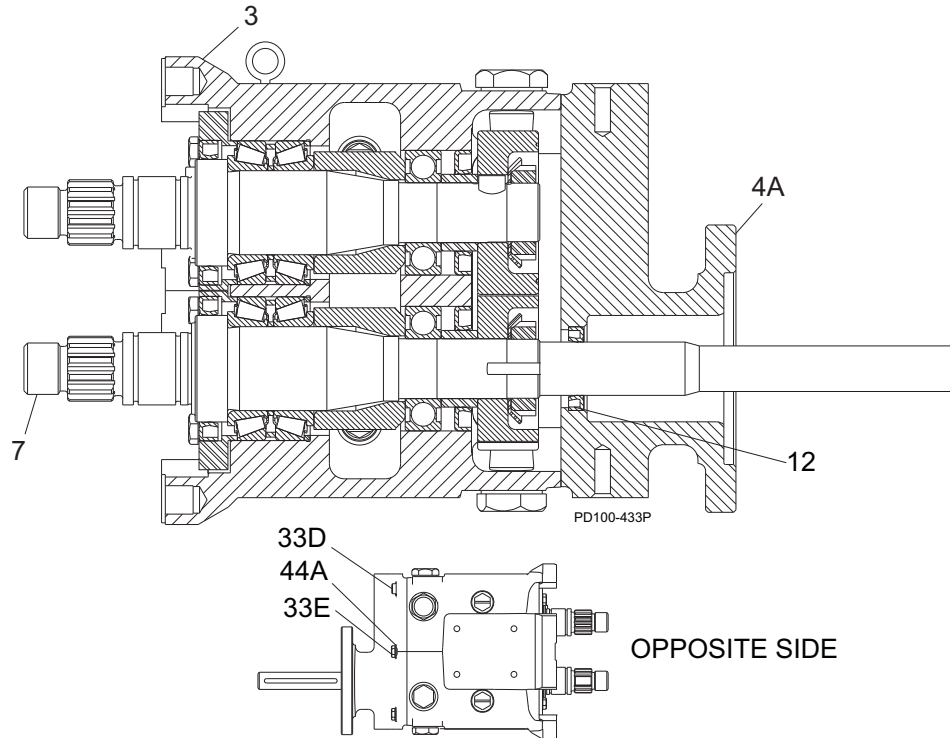
PL5060-CH115

Notes:

* **Recommended Spare Parts**

1. 060, 064, 130, 134-U1: pumps older than approx. March 2000 used p/n AD0072000.
2. 060, 064, 130, 134-U1: for pumps older than approx. March 2000, use p/n CD0073000.
3. 006, 014, 015, 018, 024-U1: pumps older than approx. March 2000 used p/n AD0076L00 for 0-20 psi
060, 064, 130, 134-U1: pumps older than approx March 2000 used p/n AD0076000 for 20-60 psi
220, 224-U1: pumps older than approx March 2000 used p/n ABB076200 for 100-200 psi.
4. 060, 064, 130, 134-U1: pumps older than approx March 2000 used p/n ABB076200 for 100-200 psi.
220, 224-U1: pumps older than approx March 2000 used p/n GD0076100
5. 060, 064, 130, 134-U1: pumps older than approx March 2000 used p/n CD0075000.
9. Quad Ring and O-Ring can be interchanged.
12. Applies to the 220-U1 and 224-U1 only.
13. Vented cover is not used on the 033-U1, 133-U1, or 223-U1 pump.

Tru-Fit™ Universal 1 PD Pumps Parts List



Item No.	Description	Qty.	U1 Pump Size				Note
			006, 014, 015	018, 024	030, 034	040	
3	Gear Case, CI	1	118986+		121687+		
4A	Gear Case Cover, Adapter	1	118982B/S/W		118678B/S/W		1, 2
			136577+		136578+		
7	Drive Shaft	1	119174+	119175+	119176+	119177+	
12	Oil Seal, Gear Case Cover	1	000030016+		000030013+		2
33D	1/4-20 x 1" HHCS	4	30-93		N/A		
	5/16-18 x 1-1/8" HHCS		N/A		30-237		
33E	5/16" x 3/4" lg. SHSB	2	30-690		N/A		
	3/8" x 3/4" lg. SHSB		N/A		30-691		
44A	Flat Washer, 5/16"	4	43-246		N/A		
	Flat Washer, 3/8"		N/A		43-30		

Item No.	Description	Qty.	U1 Pump Size				Note
			060, 064	130, 134	220, 224	320, 324	
3	Gear Case, CI	1	118987+		118988+	118989+	
4A	Gear Case Cover, Adapter	1	118983B/S/W		S/N Req'd		1, 2
			136579+		136580+		
7	Drive Shaft	1	119178+	119179+	119180+	119181+	
12	Oil Seal, Gear Case Cover	1	000030012+		STD030006	STD030004	2
33D	3/8-16 x 1-1/2" HHCS	4	30-50		N/A		
	1/2-13 x 1-1/2" HHCS		N/A		30-103		
33E	1/2" x 1" lg. SHSB	2	30-692		N/A		
	5/8" x 1" lg. SHSB		N/A		30-693		
44A	Flat Washer, 1/2"	4	43-31				

PL5060-CH65

Note:

1. Depends on the Nord motor, material, paint. Contact customer service with serial number for part number.
2. Item 12, Oil seal, gear case cover, is the same seal that is used on non-Tru-Fit pumps. It is not included with item 4A.

Grease Seal, Bearing Retainer, O-Ring Seal Carrier Part No. Reference

U1 Model Number	Item	Description	For pumps manufactured:			Notes
			before 7/30/01	Approx. 7/30/01-7/12/04	after 7/12/04 (Newest)	
006, 014, 015, 018, 024	14	Grease Seal, Bearing Retainer, standard gearcase	000030018+		121679+	8
	14	Grease Seal, Bearing Retainer, SS gearcase or Bearing Isolator	101716+			4
	32	Bearing Retainer, Front SS, for standard gearcase	015080000+	120332+		8
	32	Bearing Retainer, Front SS, for SS Gearcase or Bearing Isolator	101810+			4
		Bearing Isolator Kit	X06636-1	X06638-1		8
	84	O-Ring Seal Carrier	015034000+	015034001+		
030, 034, 040	14	Grease Seal, Bearing Retainer	000030015+	121680+		8
	32	Bearing Retainer, Front SS, for standard gearcase	030080000+	120333+		8
	32	Bearing Retainer, Front SS, for SS Gearcase or Bearing Isolator		101811+	122337+	2, 8
		Bearing Isolator Kit		X06558-1	N/A	X06639-1
	84	O-Ring Seal Carrier	030034000+	030034001+		
060, 064, 130, 134	14	Grease Seal, Bearing Retainer	000030009+			8
	32	Bearing Retainer, Front CTD	N/A, use 123531+	123531+		5
	32	Bearing Retainer, Front SS, for std. lip seal	121828+			6, 8
	32	Bearing Retainer, Front SS, used with bearing isolators.	101812+			6, 8
		Bearing Isolator Kit, SS	N/A, use X06614-2	X06614-2		8
	84	O-Ring Seal Carrier	060034000+	060034001+		
220, 224	14	Grease Seal, Bearing Retainer	N/A; use 121681+	121681+		1
	32	Bearing Retainer, Front CTD	220080000+	N/A use 121829+		
	32	Bearing Retainer, Front SS, for std. lip seal	121829+			8
	32	Bearing Retainer, Front SS, used with bearing isolators.	101813+			3, 7, 8
		Bearing Isolator Kit	X06634-2			3, 7, 8
	84	O-Ring Seal Carrier	220034000+	220034001+		
320, 324	14	Grease Seal, Bearing Retainer	N/A; use 121681+	121681+		1
	32	Bearing Retainer, Front CTD	0H1080000	N/A, use 123533+		8
	32	Bearing Retainer, Front SS, for std. gearcase	118365+	123533+		8
	32	Bearing Retainer, Front SS, used with bearing isolators.	121141+			3, 7
		Bearing Isolator Kit, SS	X06634-3			3, 7, 8

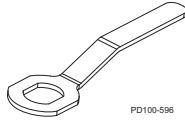
PL5060-CH114

Notes: CTD = Coated Steel; SS = Stainless Steel

1. Pumps manufactured up through 1993 may take STD030005 instead (used old-style shafts). Verify s/n to confirm.
2. 101811+ is used with bearing isolators. If isolator is needed, use part # X06639 (no kit available). Check gearcase s/n. Kit X06639-1 contains bearing retainer 122337+
3. Isolator kit X06634-2 contains 101813+ bearing retainer; Isolator kit X06634-3 contains 121141+ bearing retainer.
4. 101810+ bearing retainer is used with 101716+ grease seal.
5. 123531+ is available until stock is depleted, then will be replaced by 121828+
6. 101812+ is used with bearing isolators; for std. lip seal, use part # 121828+
7. When changing to this bearing isolator, if it rubs and is very difficult to turn over, add a .010 shim to each shaft, on top of the bearing in the pump, between the bearing and the retainer.
8. When changing a pump supplied WITHOUT a bearing isolator, to one WITH a bearing isolator, order the isolator kit. Components of this kit must be used together. If adding a bearing isolator to an assembly, discard the old retainer.

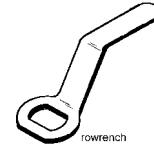
Special Tools

**Rotor Nut Wrench
 for standard pumps:**



PD100-596

**Rotor Nut Wrench for
 jacketed pumps (offset):**



rowrench

DESCRIPTION	PART NO.					NOTES
	006-014-015-018-024-U1	030-034-040-U1	060-064-130-134-U1	220-224-U1	320-323A-324-U1	
Rotor Nut Wrench, standard	109895+	109896+	109897+	109898+	112829+	
Rotor Nut Wrench, jacketed	AD0019001	CD0019001	060019001+			1
O-ring removal tool	AD0096001					
Gear Nut Driver	109281+	109282+	109283+	110304+	114702+	
Gear End Shaft Thread Chaser	109287+	109288+	109289+	110305+	N/A	
Liquid End Shaft Thread Chaser	110231+	110230+		110229+	N/A	

PL5060-CH126

Notes:

1. For 220-U1 and larger, the same tool works on both standard and jacketed cover pumps.

Shaft Assemblies with Pressed-on Bearings

DESCRIPTION	QTY. PER PUMP	PART NO.: Pumps shipped before 7/30/01	PART NO.: Pumps shipped after 7/30/01	Notes
006-014-015-U1 Drive Shaft & Bearing Assy.	1	POA	137262+	1
006-014-015-U1 Short Shaft & Bearing Assy.	1	POA	137265+	1
018-024-U1 Drive Shaft & Bearing Assy.	1	137263+	137264+	1
018-024-U1 Short Shaft & Bearing Assy.	1	137266+	137267+	1
030-034-U1 Drive Shaft & Bearing Assy., Std	1	137273+	137274+	1
030-034-U1 Drive Shaft & Bearing Assy., Optional 17-4PH	1	POA	POA	1
030-034-U1 Short Shaft & Bearing Assy., Std.	1	137496+	137275+	1
030-034-U1 Short Shaft & Bearing Assy., Optional 17-4PH	1	POA	POA	1
033A-U1 Drive Shaft & Bearing Assy., Std.	1	137495+	POA	1
033A-U1 Short Shaft & Bearing Assy., Std.	1	137276+	POA	1
040-U1 Drive Shaft & Bearing Assy., Std.	1	POA	POA	1
040-U1 Drive Shaft & Bearing Assy., Optional 17-4PH	1	POA	POA	1
040-U1 Short Shaft & Bearing Assy., Std.	1	POA	POA	1
040-U1 Short Shaft & Bearing Assy., Optional 17-4PH	1	POA	POA	1
060-064-U1 Drive Shaft & Bearing Assy.	1	137277+	POA	1
060-064-U1 Drive Shaft & Bearing Assy., Optional 17-4PH	1	POA	POA	1
060-064-U1 Short Shaft & Bearing Assy.	1	137279+	POA	1
060-064-U1 Short Shaft & Bearing Assy., Optional 17-4PH	1	137280+	POA	1
130-134-U1 Drive Shaft & Bearing Assy.	1	137278+	POA	1
130-134-U1 Drive Shaft & Bearing Assy., Optional 17-4PH	1	138511+	POA	1
130-134-U1 Short Shaft & Bearing Assy.	1	137281+	POA	1
130-134-U1 Short Shaft & Bearing Assy., Optional 17-4PH	1	137282+	POA	1
133A-U1 Drive Shaft & Bearing Assy.	1	POA	POA	1
133A-U1 Drive Shaft & Bearing Assy., Optional 17-4PH	1	POA	POA	1
133A-U1 Short Shaft & Bearing Assy.	1	POA	POA	1
133A-U1 Short Shaft & Bearing Assy., Optional 17-4PH	1	POA	POA	1
220-224-U1 Drive Shaft & Bearing Assy., Std.	1	137285+	POA	1
220-224-U1 Drive Shaft & Bearing Assy., Optional 17-4PH	1	137286+	POA	1
220-224-U1 Short Shaft & Bearing Assy., Std.	1	137287+	POA	1
220-224-U1 Short Shaft & Bearing Assy., Optional 17-4PH	1	137288+	POA	1
320/324U1 Drive Shaft & Bearing Assy., Std.	1	137314+	137515+	1, 2
320/324-U1 Drive Shaft & Bearing Assy., Optional 17-4PH	1	POA	POA	1, 2
320/324U1 Short Shaft & Bearing Assy., Std.	1	137315+	137516+	1, 2
320/324-U1 Short Shaft & Bearing Assy., Optional 17-4PH	1	POA	POA	1, 2

PL5060-CH127

Notes:

- All assemblies include items:
7 or 8 (Drive or short shaft), 15 (Rear bearing), 16 (Front bearing), 17 (Gear key), 29 (Gear to rear bearing spacer), and 30 (Front bearing spacer), assembled together.
See model-specific parts lists on the previous pages for drawings with item numbers
- For 320/324-U1 pumps: These assemblies also include: 30A (Bearing spacer), 31 (Grease retainer), and 41 (Locknut), which are assembled with the items listed in Note 1, above.
To use these shaft and bearing assemblies in a gearbox shipped before 7/30/01, you will also need part numbers STD119000 x1 and 102470+ x1. All these items are available (unassembled) in the kits on page 83.

POA = Contact SPX FLOW Customer Service for part number.